



FITTING INSTRUCTIONS

Part Number: **5448150**

Product Description: UNDER VEHICLE PROTECTION

Suited to vehicle/s: ISUZU DMAX AND MAZDA BT50 2020

Please place these instructions in vehicle glovebox when complete.

WARNING

REGARDING VEHICLES EQUIPPED WITH SRS AIRBAG:

When installed in accordance with these instructions, the vehicle protection panels do not affect operation of the SRS airbag.

ALSO, NOTE THE FOLLOWING:

- ◆ This product must be installed exactly as per these instructions using only the hardware supplied.
- ◆ Do not use this product for any vehicle make or model, other than those specified by ARB.
- ◆ Do not remove labels (if any) from this product.
- ◆ This product or its fixing must not be modified in any way.
- ◆ The installation of this product may require the use of specialized tools and/or techniques
- ◆ These instructions are correct as at the publication date. ARB Corporation Ltd. cannot be held responsible for the impact of any changes subsequently made by the vehicle manufacturer
- ◆ During installation, it is the duty of the installer to check correct operation/clearances of all components
- ◆ Work safely at all times
- ◆ Unless otherwise instructed, tighten fasteners to specified torque

ARB 4x4 ACCESSORIES

Corporate Head Office

42-44 Garden St
Kilsyth, Victoria
AUSTRALIA 3137

Tel: +61 (3) 9761 6622
Fax: +61 (3) 9761 6807

Australian enquiries
North & South American enquiries
Other international enquiries

sales@arb.com.au
sales@arb.com.au
exports@arb.com.au

www.arb.com.au

IMPORTANT INFORMATION. GENERAL CARE AND MAINTENANCE

By choosing ARB vehicle protection, you have bought a product that is one of the most sought after 4WD products in the world. Your under vehicle protection panels are a properly engineered, reliable, quality accessory that represents excellent value.



- While these panels have been engineered for strength and functionality care and good judgment should be taken when traversing difficult off-road conditions to minimise damage to panels and vehicle.
- During servicing when panels are removed ensure fasteners are re-fitted to the correct torque values.
- Inspect panels visually on a regular basis. Dirt and foreign matter should be washed out to minimise build-up around hot components. **BE VERY CAREFUL** when removing foreign matter with hands while vehicle is hot or running. Replace any components as necessary. This service can be performed by your local authorized ARB Stockist.

FITTING REQUIREMENTS

REQUIRED TOOLS FOR FITMENT OF PRODUCT:

| | |
|-----------------------|----------------------|
| BASIC TOOL KIT | TORQUE WRENCH |
|-----------------------|----------------------|

HAVE AVAILABLE THESE SAFETY ITEMS WHEN FITTING PRODUCT:

| | | | |
|---------------------------|---|---------------------------|---|
| Protective eyewear |  | Hearing protection |  |
|---------------------------|---|---------------------------|---|

NOTE: 'WARNING' notes in the fitting procedure relate to OHS situations, where to avoid a potentially hazardous situation it is suggested that protective safety gear be worn or a safe work procedure be employed. If these notes and warnings are not heeded, injury may result.

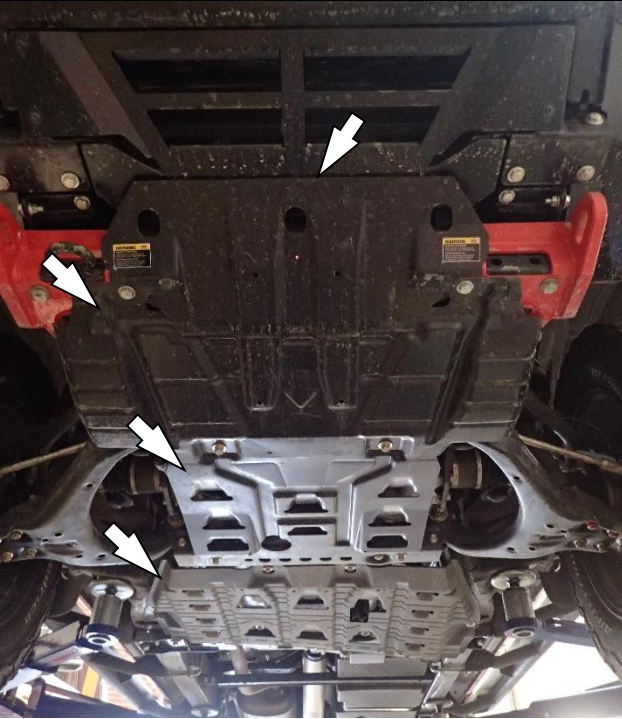
FASTENER TORQUE SETTINGS (unless otherwise specified):

| SIZE | Torque Nm | Torque lbft |
|------|-----------|-------------|
| M6 | 9 | 7 |
| M8 | 22 | 16 |
| M10 | 44 | 32 |
| M12 | 77 | 57 |

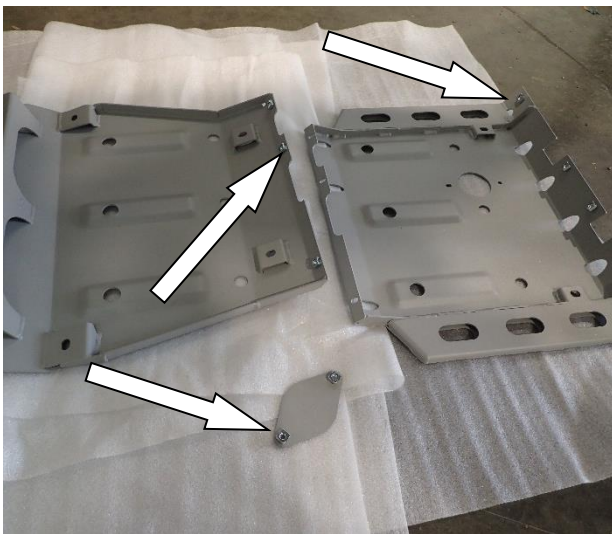
PARTS LISTING

| APPLICATION. | PART NO. | QTY. | DESCRIPTION. |
|---------------------------------|----------|------|-----------------------------------|
| FIT FRONT PANEL | 4655050 | 1 | PANEL ASSY FRONT |
| | 6151303 | 3 | NUT CAGED M8 |
| | 4581044 | 3 | WASHER FLAT M8 |
| | 6151022 | 3 | BOLT M8x1.25x25 |
| | 4584373 | 4 | WASHER FLAT M10x22.9x2 HV300 ZP |
| | 6151088 | 4 | BOLT HXHD M10x1.25x35 PC8.8 ZP |
| | 4584394 | 2 | WASHER FLAT M10x24x6 ZP |
| | 6151087 | 3 | BOLT HXHD M10x1.25x25 PC8.8 ZP |
| | 4584373 | 3 | WASHER FLAT M10x22.9x2 HV300 ZP |
| FIT DIFF PANEL | 4655051 | 1 | PANEL ASSY FRONT DIFF |
| | 4581044 | 5 | WASHER FLAT M8 |
| | 6151022 | 3 | BOLT M8x1.25x25 |
| | 6151087 | 2 | BOLT M10x1.25x25 |
| | 6151295 | 2 | SCREW BHD M8x20 SS A4-70 |
| | 4584373 | 2 | WASHER FLAT M10 |
| | 3195363 | 1 | SUMP PLUG COVER |
| | 6151303 | 6 | NUT CAGED M8 |
| FIT TRANSMISSION PANEL | 4655052 | 1 | PANEL ASSY TRANSMISSION |
| | 6151303 | 3 | NUT CAGED M8 |
| | 6151022 | 8 | BOLT M8x1.25x25 |
| | 4581044 | 8 | WASHER FLAT M8 |
| FIT TRANSFER CASE PANEL | 4655053 | 1 | PANEL ASSY TRANSFER CASE |
| | 6151022 | 5 | BOLT M8x1.25x25 |
| | 4581044 | 5 | WASHER FLAT M8 |
| | 3195274 | 2 | PLATE NUT WELD ASSY M12 31X225 |
| | 3195315 | 2 | TRANSFER CHASSIS PACKER |
| | 4584363 | 2 | WASHER FLAT M12x26x4 |
| | 6151360 | 2 | BOLT HXHD M12x1.75X35 |
| FIT TRANSMISSION SUPPORT ARM | 4655054 | 1 | TRANSFER SUPPORT ARM |
| | 4655055 | 2 | NUT PLT M8x1.25 |
| | 4581044 | 2 | WASHER FLAT M8 |
| | 6151022 | 2 | BOLT M8x1.25x25 |

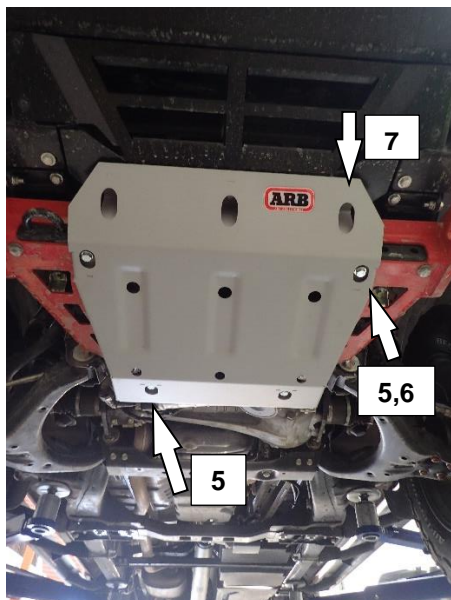
FITTING PROCEDURE



Factory under vehicle protection



PREPARING OF UVP PANELS



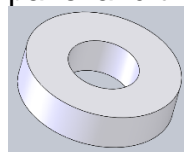
FITMENT OF FRONT UVP

1. Remove factory stone shields from vehicle. Start at the rear and move forward.
2. Discard the 4 panels and all fasteners. The rear plastic panel has 2 steel brackets, remove these also.

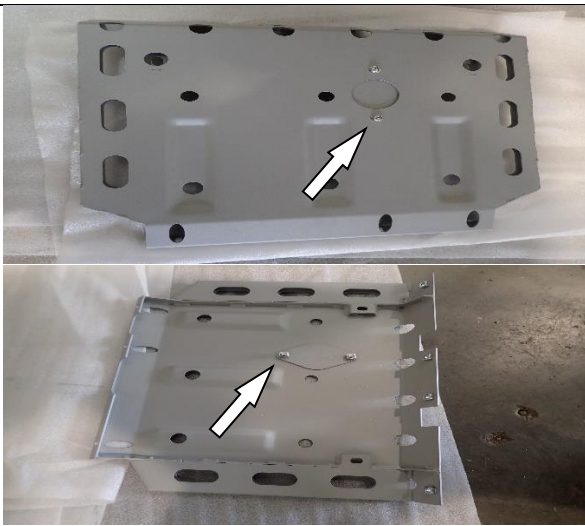
3. Place all the UVP panels on a soft material.
4. Insert all the M8 cage nuts into the square holes on each panel.

NOTE: Leave all fasteners loose until stated to tighten.

5. Using 4 x M10 x 35mm HXHD bolts, 4 x M10 washers, fit the Front UVP to the vehicle.
6. If the vehicle is NOT fitted with an ARB recovery point kit, use spacer 4584394 on the front 2 M10 fasteners between the UVP panel and the chassis.

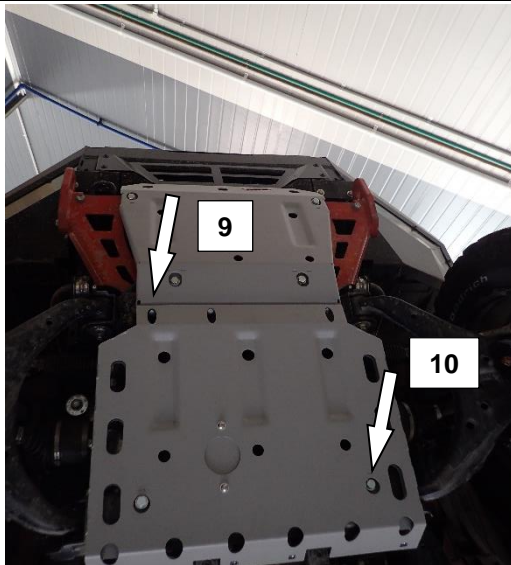


7. Use 3 x M8 x 25 HXHD bolts and 3 x M8 washers to secure the front to either, the ARB bull bar or OE panel. (3 x M10x25x1.25 bolts and washers are supplied for OE fitment.)



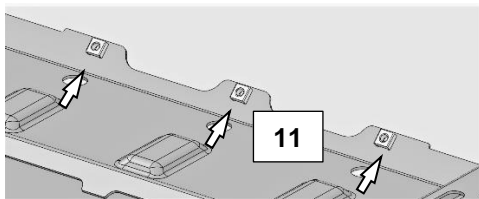
PREPARING THE FRONT DIFF UVP

8. Place the sump cover plate onto the inside of the UVP and use, 2 x M8x20 BHD and 2 x M8 washers to secure in-place.

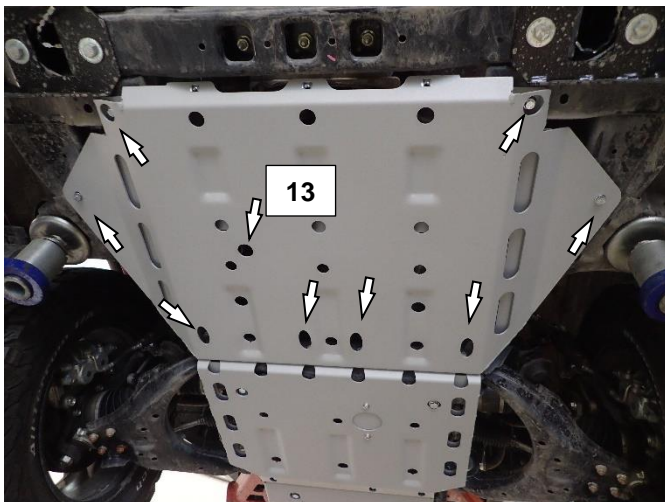


FIT FRONT DIFF UVP

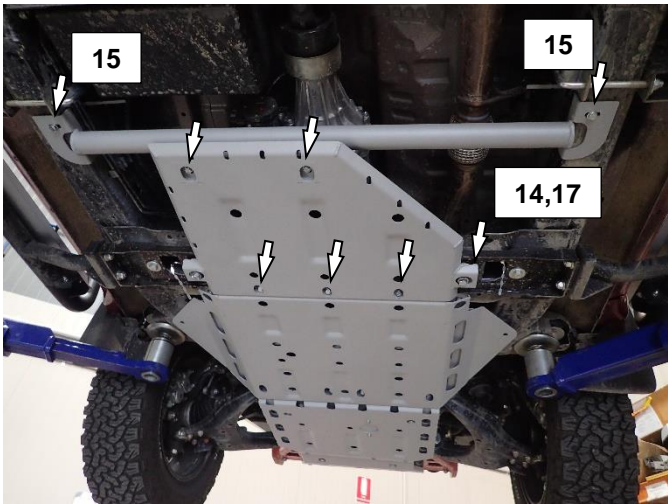
9. Using 3 x M8x25 HXHD bolts and 3 x M8 washers align the Diff panel to the Front UVP and insert bolts.
10. Use the 2 x M10x25 HXHD bolts and 2 x M10 washers to secure the rear of the Diff panel.



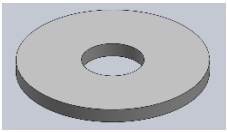
11. Fit 3 x M8 cage nuts to rear of Transmission panel before fitting to vehicle.
12. The Transmission UVP is fitted with 8 x M8x25 HXHD bolts and 8 x M8 washers.
13. Align aircon drain tube with hole provided.



FIT TRANSMISSION UVP



TRANSFER CASE UVP AND REAR SUPPORT



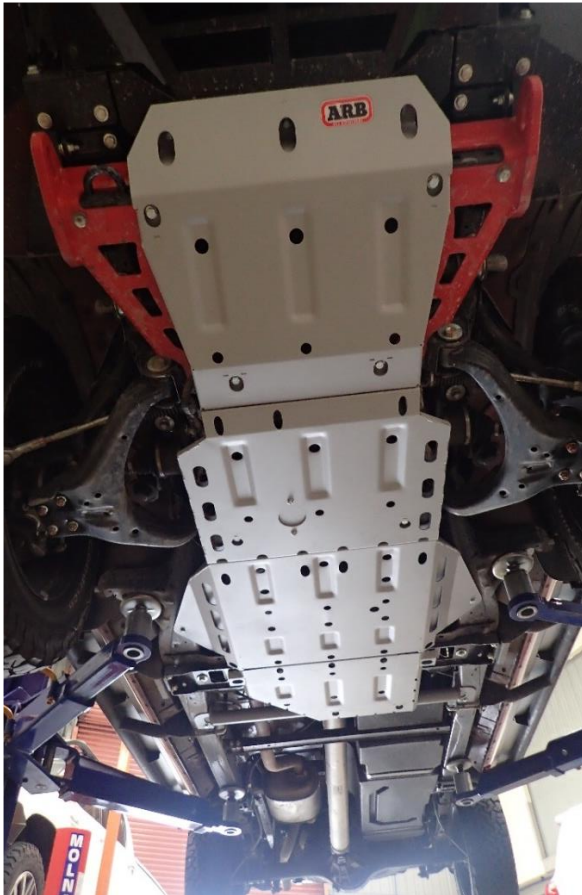
3195315

14. If the vehicle is fitted with an ARB side step, remove the 2 inner bolts, washes and nut plates then discard.
15. Fit the rear cross member to the chassis using the 2 x M8 nut plates, 2 x M8x25 HXHD bolts and 2 x M8 washers. Access is through an opening in the chassis side.



16. Fit the Transfer case UVP to the cross member and Transmission UVP using 5 x M8x25 HXHD bolts and 5 x M8 washers.
17. If the vehicle is fitted with Side steps the UVP will fit directly against the mount, if no steps are fitted use the spacer 3195315 when fitting the 2 x M12x40 HXHD bolts, 2 x M12 washers and 2 x M12 nut plates into the chassis.

FITTED UVP



18. Once all panels and fasteners are fitted, start from the front and tighten all the fasteners to the rear. Use the Torque table on page 2 for each Torque setting.