

**RD246**

Dana M210/M220, Jeep JL Rubicon, 35 SPL

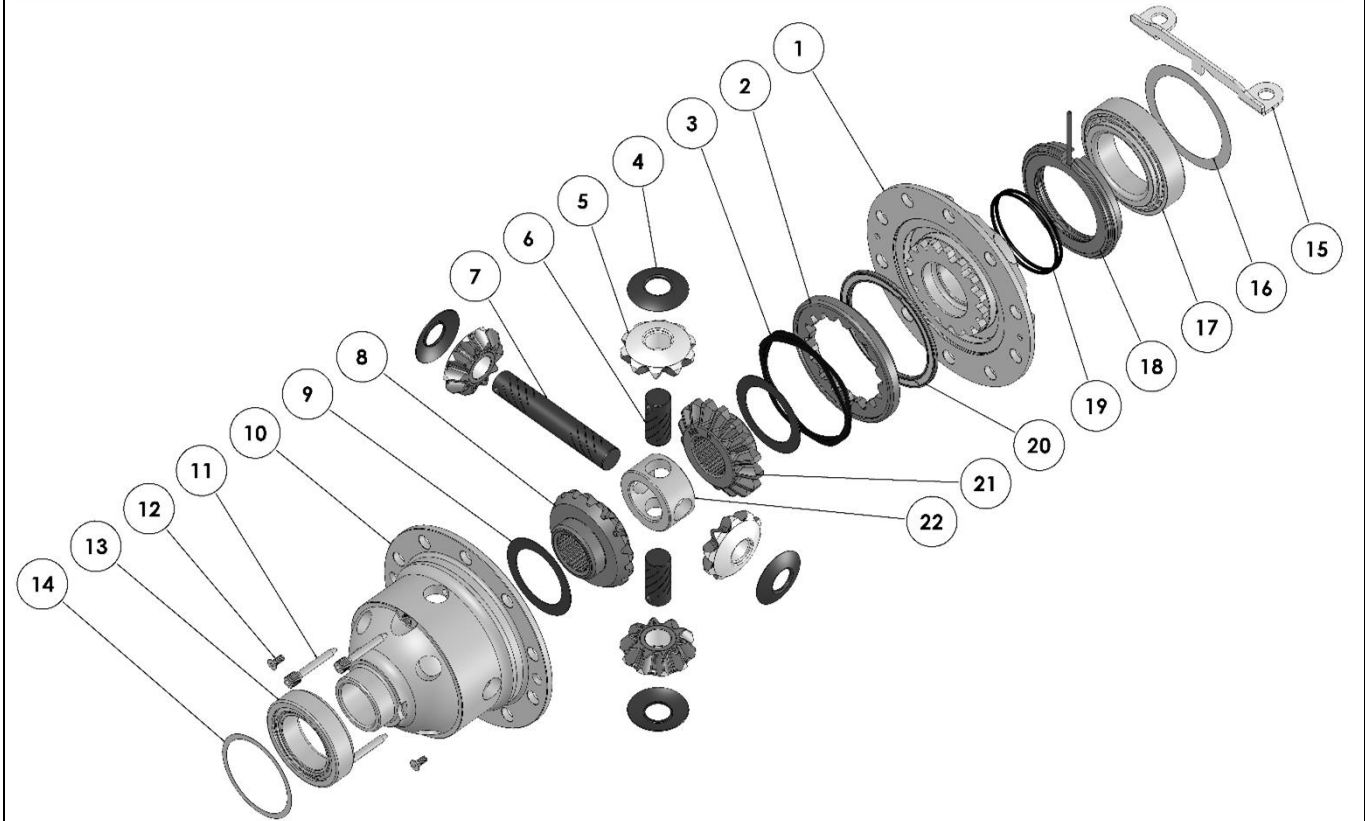
### PARTS LIST

ITEM #	QTY	DESCRIPTION	PART #	NOTES
01	1	FLANGE CAP KIT	027353SP	
02	1	CLUTCH GEAR & WAVESPRING KIT	050906SP	
03	1	WAVESPRING	150706SP	
04	4	PINION THRUST WASHER	SEE NOTE	3
05	4	PINION GEAR	SEE NOTE	2
06	2	SHORT CROSS SHAFT	060403SP	
07	1	LONG CROSS SHAFT	060204SP	
08	1	SIDE GEAR	SEE NOTE	2
09	2	SIDE GEAR THRUST WASHER	SEE NOTE	3
10	1	DIFFERENTIAL CASE	013053SP	
11	1	RETAINING PIN SET (PK OF 4)	120601SP	
12	1	COUNTERSUNK SCREW (PK OF 2)	200213SP	
13	-	TAPERED ROLLER BEARING	NOT SUPPLIED	
14	1	SHIM KIT	SHK008	
15	1	SEAL HOUSING BRACKET	220224	
16	1	SHIM KIT	SHK001	
17	-	TAPERED ROLLER BEARING	NOT SUPPLIED	
18	1	SEAL HOUSING KIT	082101SP	
19	1	SEAL HOUSING O-RINGS (PK OF 2)	160233-2	1
20	1	BONDED SEAL	160702SP	
21	1	SPLINED SIDE GEAR	SEE NOTE	2
22	1	SPIDER BLOCK	070201SP	
*	1	BULKHEAD FITTING KIT (BANJO TYPE)	170114	
*	1	AIR LINE (6mm DIA X 6m LONG)	170314SP	
*	1	SOLENOID VALVE (12V)	180103	
*	1	SWITCH FR OR RR LOCKER	180225	
*	1	CABLE TIE (PK OF 25)	180305	
*	1	OPERATING & SERVICE MANUAL	210200	
*	1	INSTALLATION GUIDE	2102246	

\* *Not illustrated in exploded view*

### NOTES

- 1 For replacement O-rings use only BS148 Viton 75.
- 2 Available only as complete 6 gear set # 728H031
- 3 Available only as complete thrust washer kit #730H01
- 35 spline aftermarket axle shafts MUST be used.

**EXPLODED DIAGRAM****SPECIFICATIONS**

<b>Axle Spline</b>	35 tooth, Ø38.1mm [1.50"]
<b>Ratio Supported</b>	All
<b>Ring Gear ID</b>	134.66mm [5.302"]
<b>Ring Gear OD</b>	Front - 210.00mm [8.267"] Rear - 220.00mm [8.661"]
<b>Ring Gear Bolts</b>	10 bolts on Ø157.8mm [6.213"]
<b>Ring Gear Torque</b>	Front - 136Nm [100 ft-lb] Rear - 180Nm [132 ft-lb]
<b>Backlash</b>	0.12-0.18mm [0.003-0.005"]
<b>Bearing Cap Torque</b>	Front - 108Nm [80 ft-lb] Rear - 95Nm [70 ft-lb]

ARB Corporation Ltd ▪ 42-44 Garden St Kilsyth VIC 3137 Australia  
ARB 4X4 Accessories USA ▪ 4810 D St. NW #103 Auburn WA 98001 USA  
Australia & International Customer Service ▪ +61 3 9761 6622  
North America Customer Service ▪ Toll Free 866 293 9078  
www.arb.com.au (AUS & Int) www.arbusa.com (N. America)