

FITTING INSTRUCTIONS

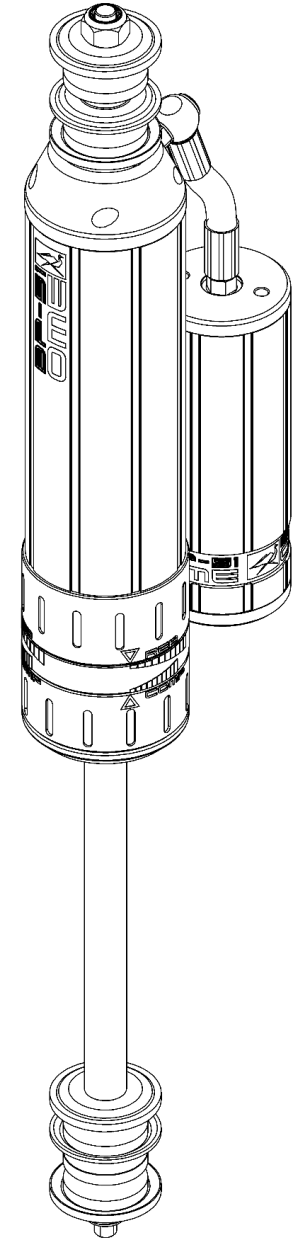
BP5160009

TOYOTA LANDCRUISER 76/78/79 SERIES FRONT

WARNING

- ◆ This product must be installed exactly as per these instructions using only the hardware supplied.
- ◆ In the event of damage to any suspension component, contact your nearest authorised ARB stockist. Repairs or modifications to the suspension system components must not be attempted.
- ◆ Do not use this product for any vehicle make or model, other than those specified by ARB.
- ◆ Do not remove labels from suspension components.
- ◆ This product or its fixing must not be modified in any way.
- ◆ The installation of this product may require the use of specialized tools and/or techniques
- ◆ It is recommended that this product is only installed by trained personnel
- ◆ These instructions are correct as at the publication date. ARB Corporation Ltd. cannot be held responsible for the impact of any changes subsequently made by the vehicle manufacturer
- ◆ During installation, it is the duty of the installer to check correct operation/clearances of all components
- ◆ Work safely at all times

Note: These fitting instructions should be read in conjunction with the vehicle workshop manual.



FITTING KIT CONTENTS – VM80010006

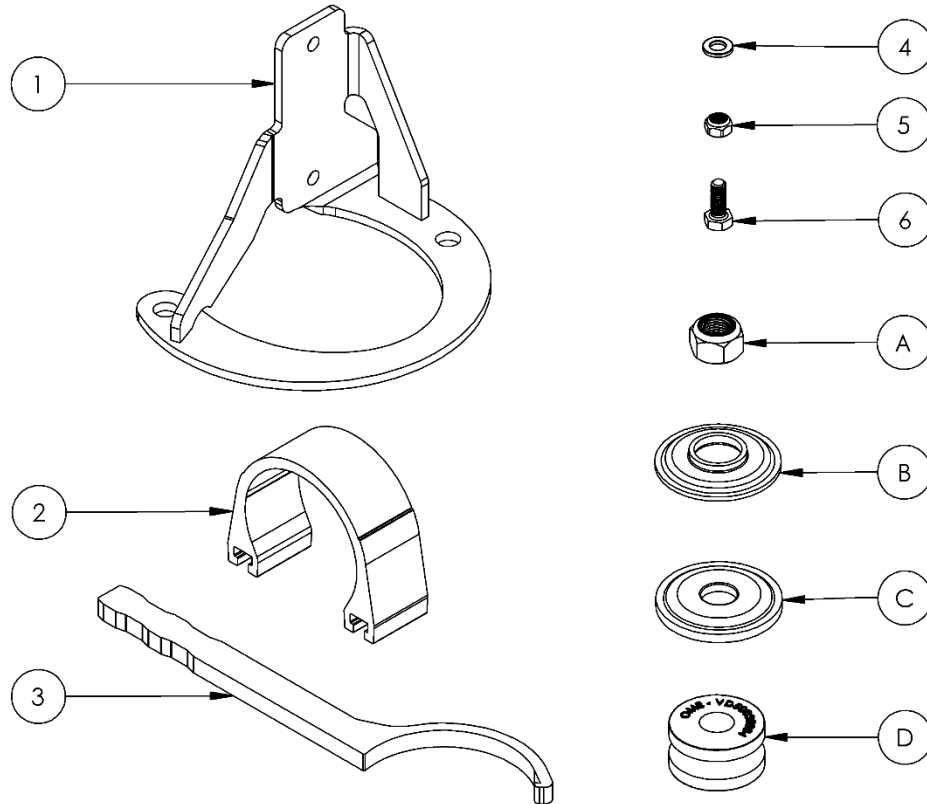
Item	Description	Qty	Spare Part No.
1	RESI MOUNT: LC76/79 FRONT	1	VE10020001LSP
		1	VE10020001RSP
2	MOUNT: RESERVOIR CLAMP	2	VE10010003SP
3	TOOL: ADJUSTER TOOL	1	VC10010071SP
4	WASHER: M6 BLACK	4	VE70020005SP
5	FASTENER: M6 NYLOC NUT	4	VD60010003SP
6	FASTENER: M6x1.0X16 BOLT	4	VD60030003SP

PIN MOUNT BUSH KIT CONTENTS

(Only sold as kit – Spare Part Number VM50010005SP)

Item	Description	Qty	Part No.
A	FASTENER: M12 NYLOC NUT	2	VD60010002
B	WASHER LOCATING 195002	2	VF60020005
C	WASHER RETAINING 145004	4	VF60020006
D	BUSH NR 143820	4	VD50030004

NOTE: This pin mount bush kit is supplied with the BP-51 damper.

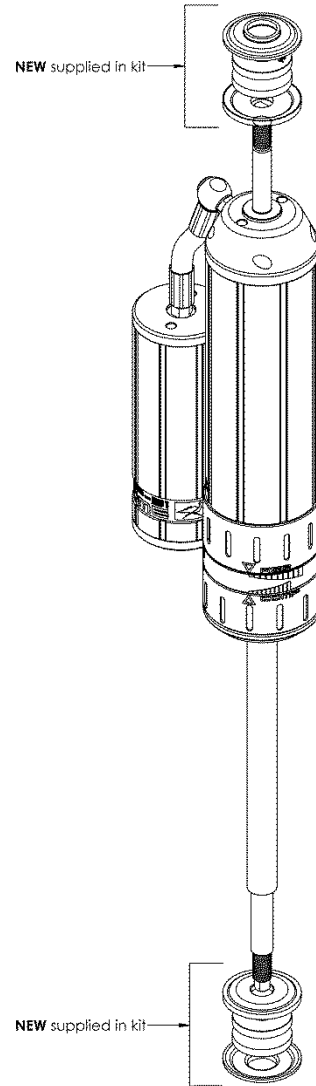


DAMPER PREPARATION

The new BP-51 needs to be prepared with mounting components before it is fitted to the vehicle.

Left and Right are the same.

Refer to the next step for mounting the damper to the vehicle.



Top Mount

Fit the retaining washer, bush and then locating washer to the pin.

Bottom Mount

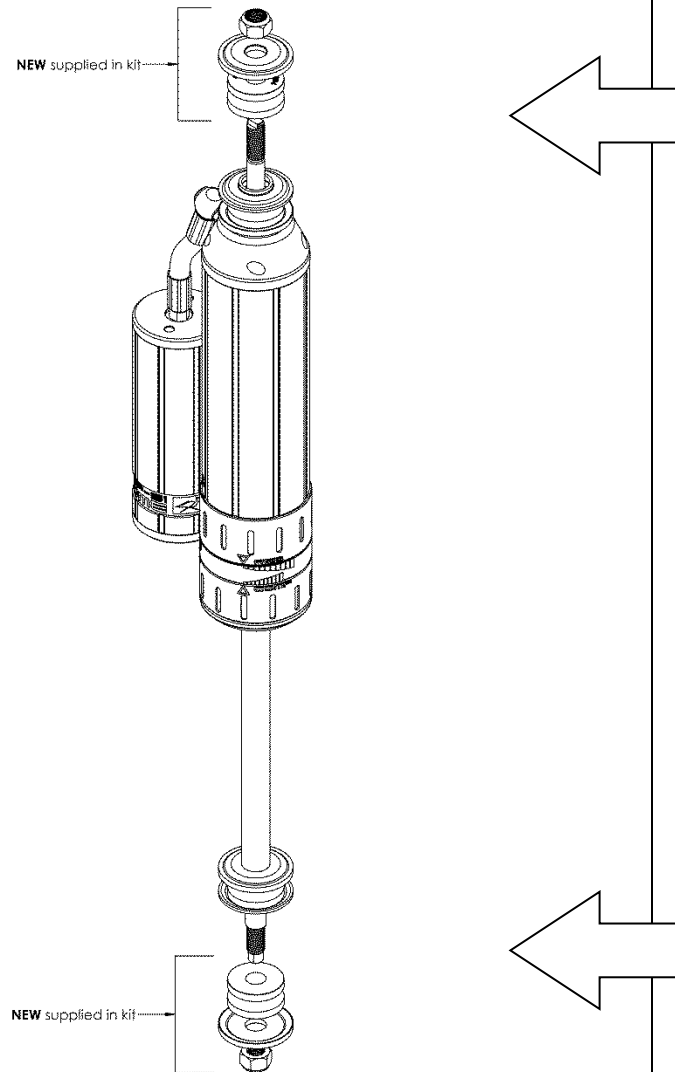
Fit the retaining washer, bush and then locating washer to the pin.

DAMPER MOUNTING SEQUENCE

The BP-51 needs to be fitted with the suspension in droop. Front sway bar and diff breather can be removed to gain more droop.

Mount the BP-51 dampers using the hardware in the sequence as shown.

Ensure all top and bottom mounting hardware is securely fastened.



Top Mount

Fit the damper to the vehicle top mount first.

Fit the locating washer, bush, retaining washer and secure with the nut as shown by the diagram.

The nyloc nut should be firmly secured against the retaining washer.

Fit the top mount such that the hose leaving the damper is pointing towards the outside of the vehicle.

Bottom Mount

Fit the bush and retaining washer and secure with the nut as shown by the diagram.

The nyloc nut should be firmly secured against retaining washer.

RESERVOIR MOUNTING SEQUENCE

Fit M6 bolts to mounting bracket and secure with nyloc nut and flat washer. Secure finger tight only at this stage.

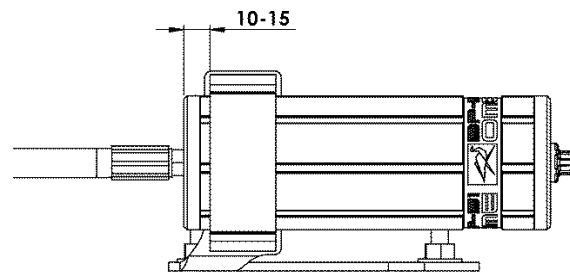
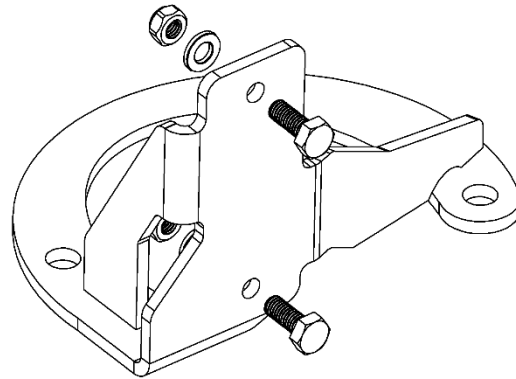
Remove nuts securing spring center then fit reservoir mounting bracket and secure using the original hardware. Torque to 37 Nm (27 ft.lb).

Fit the mounting saddle to the reservoir and slide over the heads of the bolts in the mounting plate. Centralise the saddle on the plate and adjust the position of the reservoir as shown.

Ensure the reservoir clears the vehicle body and that the hose has a clean arc with no kinks.

Note position of reservoir to clamp shown by the photos as a guide.

Fasten hardware securely and torque where specified.



(RH SHOWN)



SPECIFICATIONS AND SPARE PARTS

1	Spare Part: Top Bush Kit	VM50010005SP
2	Spare Part: Hose	VD81020090SP
3	Spare Part: Oil	VC30040001SP
4	Specification: Nitrogen Pressure	2000 kPa
5	Specification: Factory Rebound Setting	5
6	Specification: Factory Compression Setting	4
7	Spare Part: Valve Cap	VD30020003SP
8	Spare Part: Lower Bush Kit	VM50010005SP
9	Spare Part: Damper Mounting Kit	VM800010006

DAMPING ADJUSTMENT

These dampers have been set in the factory to be used for a vehicle with accessories fitted. If your load or accessory fitment differs, use the table below as a guide for recommended compression (Comp) and rebound (Reb) adjuster settings. Refer to the Owners' Manual for more information.

Front accessories	Comp	Reb
Bar & winch	4-8	6-10
Bar only	2-6	5-9
No accessories	0-4	4-8

