

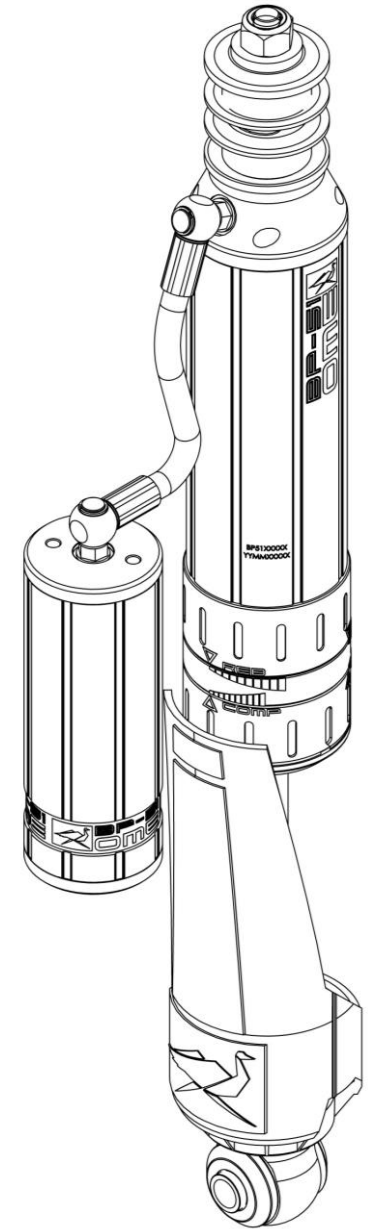
FITTING INSTRUCTIONS

BP5160019, BP5160058
NISSAN Y62 PATROL REAR

WARNING

- ◆ This product must be installed exactly as per these instructions using only the hardware supplied.
- ◆ In the event of damage to any suspension component, contact your nearest authorised ARB stockist. Repairs or modifications to the suspension system components must not be attempted.
- ◆ Do not use this product for any vehicle make or model, other than those specified by ARB.
- ◆ Do not remove labels from suspension components.
- ◆ This product or its fixing must not be modified in any way.
- ◆ The installation of this product may require the use of specialized tools and/or techniques
- ◆ It is recommended that this product is only installed by trained personnel
- ◆ These instructions are correct as at the publication date. ARB Corporation Ltd. cannot be held responsible for the impact of any changes subsequently made by the vehicle manufacturer
- ◆ During installation, it is the duty of the installer to check correct operation/clearances of all components
- ◆ Work safely at all times

Note: These fitting instructions should be read in conjunction with the vehicle workshop manual.



FITTING KIT CONTENTS – VM80010021

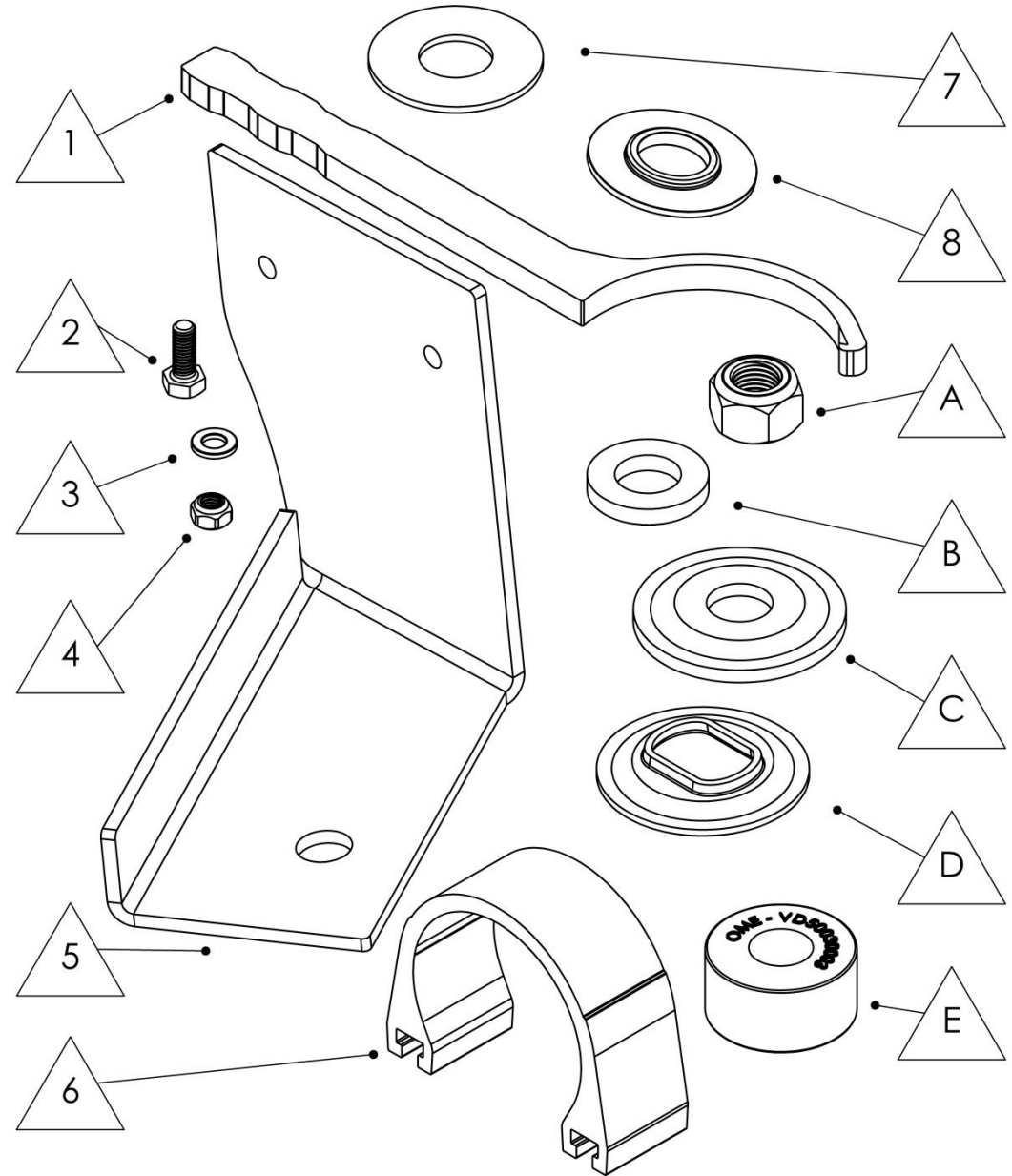
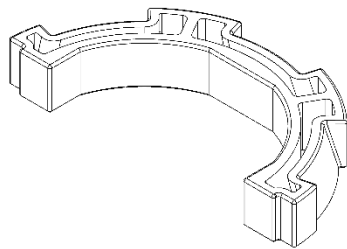
Item	Description	Qty.	Spare Part No.
1	ADJUSTER TOOL	1	VC10010071SP
2	M6 x 1.0 X 16 BOLT	4	VD60030003SP
3	M6 WASHER FLAT BLACK	4	VE70020005SP
4	M6 NYLOC NUT	4	VD60010003SP
5	RESI MOUNT BRACKET LEFT	1	VE10020022LSP
5	RESI MOUNT BRACKET RIGHT	1	VE10020022RSP
6	RESERVOIR MOUNT CLAMP	2	VE10010003SP
7	WASHER: ID19 OD46 T2	2	VE70020006SP
8	WASHER: ID19 OD2446 T4	2	VE70020017SP

SUPPLIED WITH BP-51 DAMPER

PIN MOUNT BUSH KIT (Spare Part No. VM50010012SP)

Item	Description	Qty.	Part No.
A	M14 x 1.5 NYLOC NUT	1	VD60010007
B	WASHER ID17 OD32 T5	1	VE70020013
C	WASHER RETAINING	2	VF60020004
D	WASHER LOCATING	2	VF60020008
E	BUSH NR 174020	2	VD50030003

SHAFT GUARD RETAINERS (Spare Part No. VD31000003SP)



DAMPER MOUNTING SEQUENCE

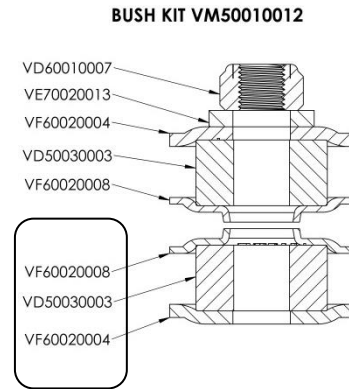
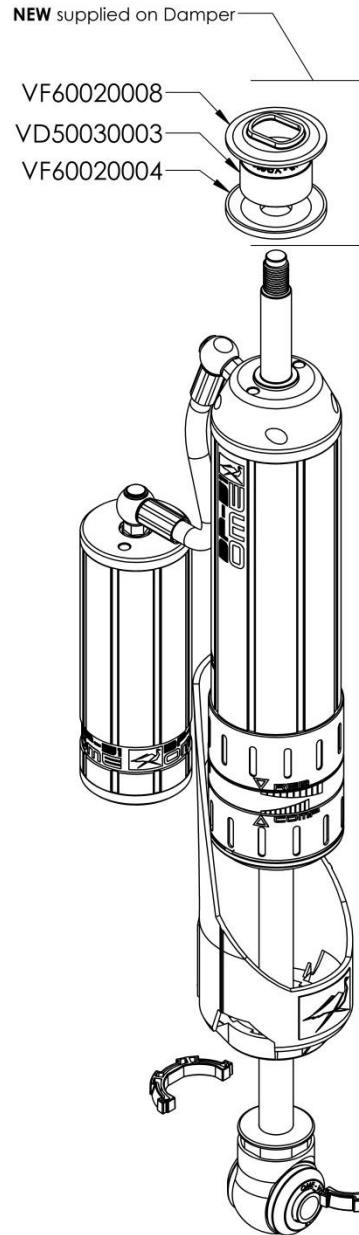
1. Preparation
2. Install BP-51 damper
3. Mount Resi

1. PREPARATION

The new BP-51 needs to be prepared with mounting components and Resi brackets before it is fitted to the vehicle.

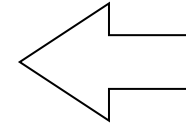
Left and Right dampers are the same, however the RESI Mounts have a Left and Right hand side bracket.

Refer to the next step for mounting the damper to the vehicle.



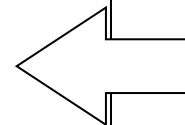
Top Mount

Fit the retaining washer VF60020004, Bush VD50030003 and locating washer VF60020002 to the pin.



Bottom Mount

Please see next page for further details



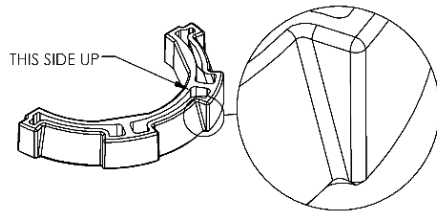
SECURING SHAFT GUARDS

The shaft guards are designed to protect the shaft from stones thrown from the front wheels and are mounted to the front side of the damper.

It is easiest to secure the shaft guards before the dampers are fitted to the vehicle.

Please follow steps 1-3.

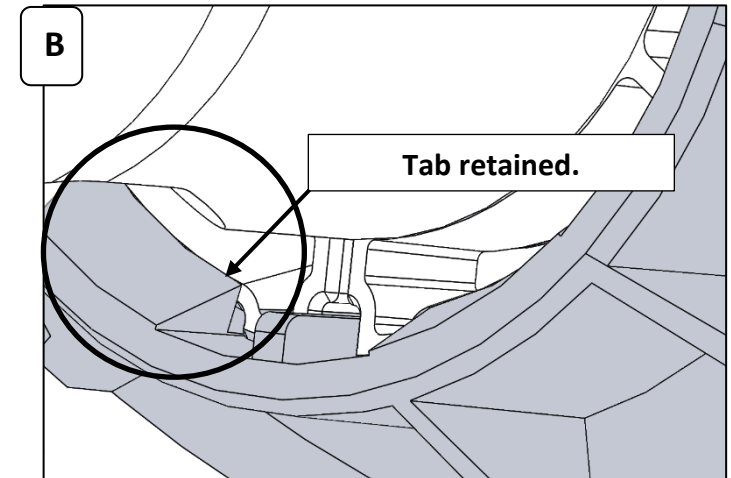
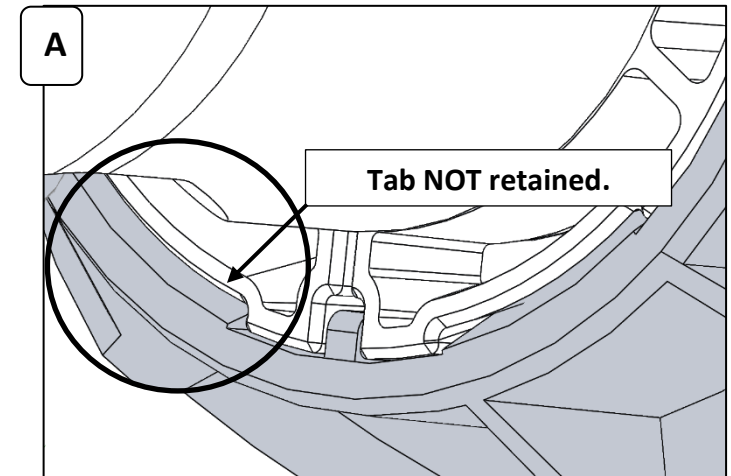
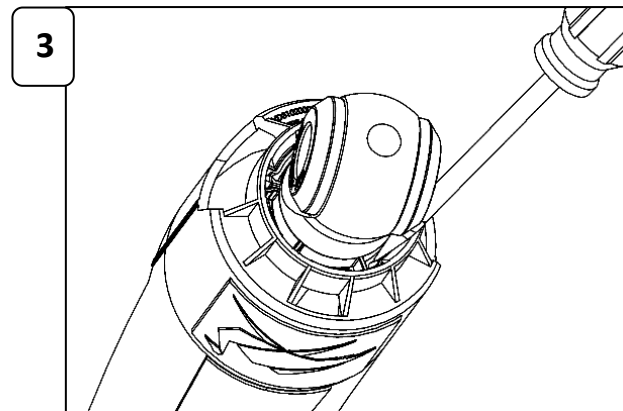
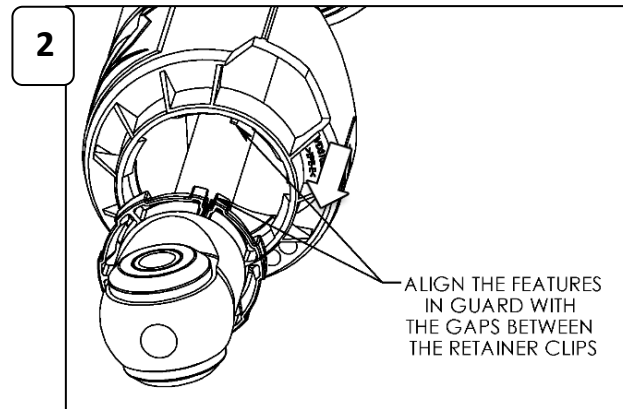
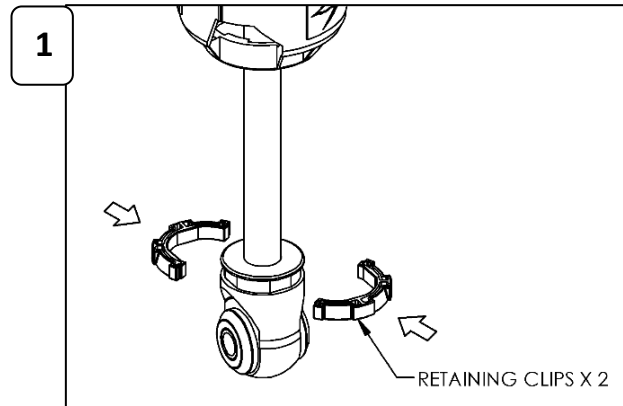
1. Fit the two retainers to the eyelet as shown. Note the orientation.



2. There are features on the shaft guard that locate in the gaps between the two retainers. Align the guard with these gaps and firmly pull the shaft guard down over the retainers to secure in place.

3. Check retainers are completely secured by guard. Use a flat blade screwdriver to poke retainers under tabs on guard if required. Refer to pictures (A) and (B) for correct fitment.
IMPORTANT: Ensure ALL tabs are fully retained.

NOTE: Ensure the stone guard does not touch the brake hose once installed



IMPORTANT: Ensure ALL tabs are fully retained

PREPARING RESI MOUNT

Attaching Resi Bracket to Damper – RHS Shown

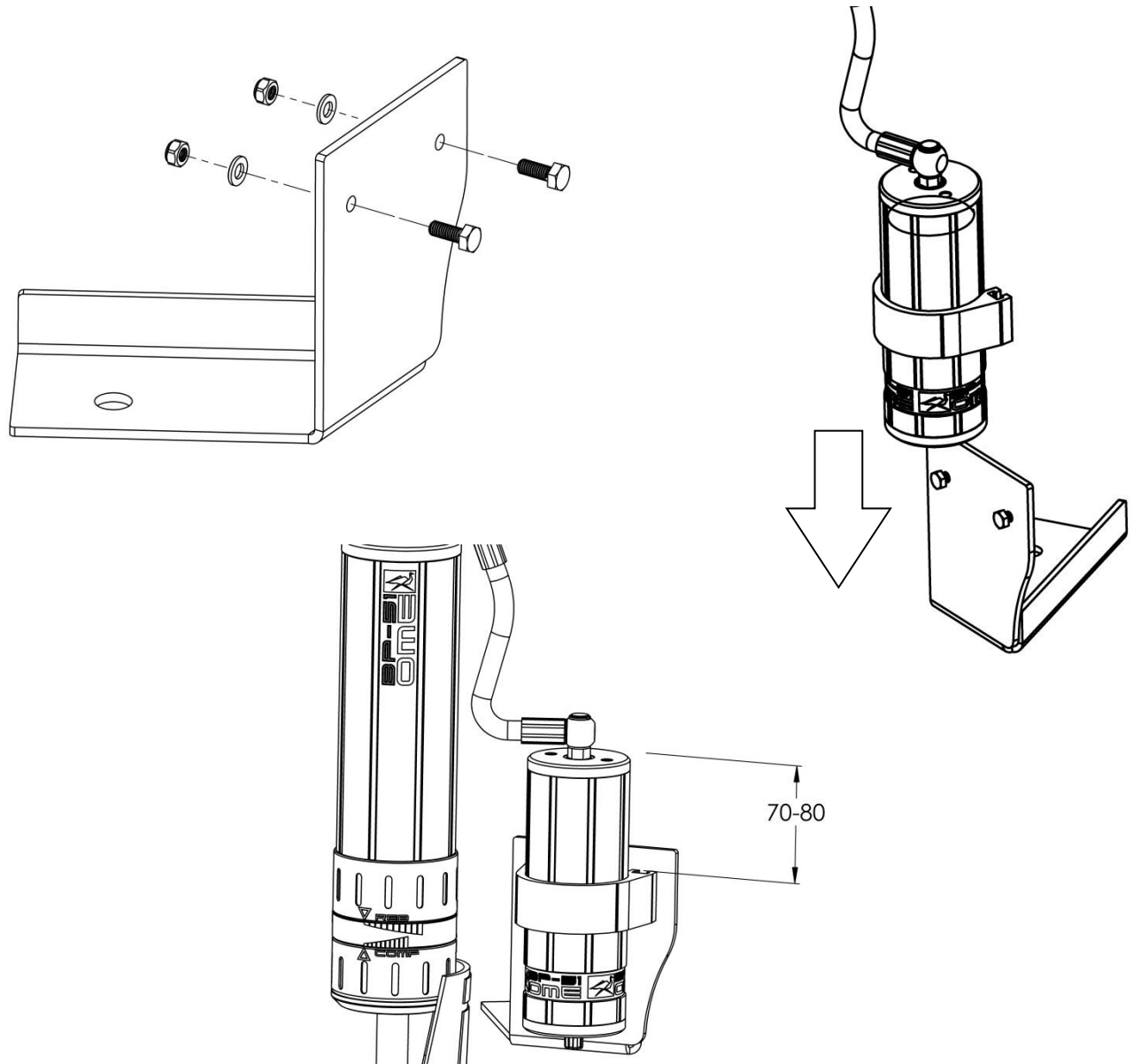
Fix fasteners to Resi Brackets

1.3a Fit M6 hardware to resi mounting bracket as shown with washers fitted on the nut side. Secure finger tight only.

1.3b Fit the reservoir clamp to the reservoir then slide the assembly over the heads of the bolts in the bracket. The edge of the mounting clamp should be parallel with the edge of the bracket

1.3c Align the reservoir so that the clamp sits squarely on the mounting bracket and the position the resi to have 70-80mm above the top face of the resi clamp as shown
Securely fasten the M6 Nyloc nuts using a 10mm spanner. (ring or ratchet spanners work best)

Refer to the next step for mounting the damper to the vehicle.



2.0 DAMPER MOUNTING SEQUENCE

The BP-51 Y62 Rear can be fitted one of two ways,

#1 De-gas the reservoir, Compress the shock to install, once fitted regas with nitrogen once fitted to 2000kpa / 290PSI.

#2 Disconnecting Rear lower control arm.

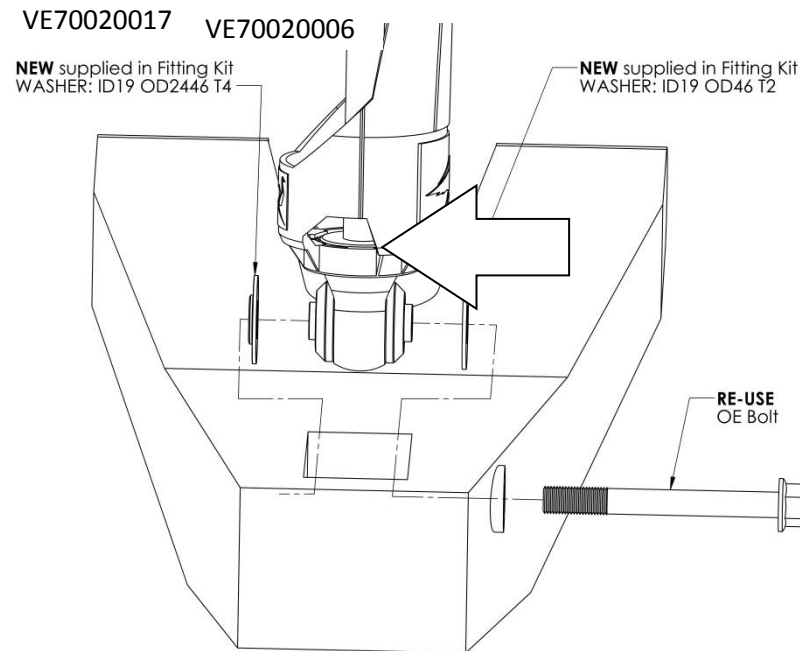
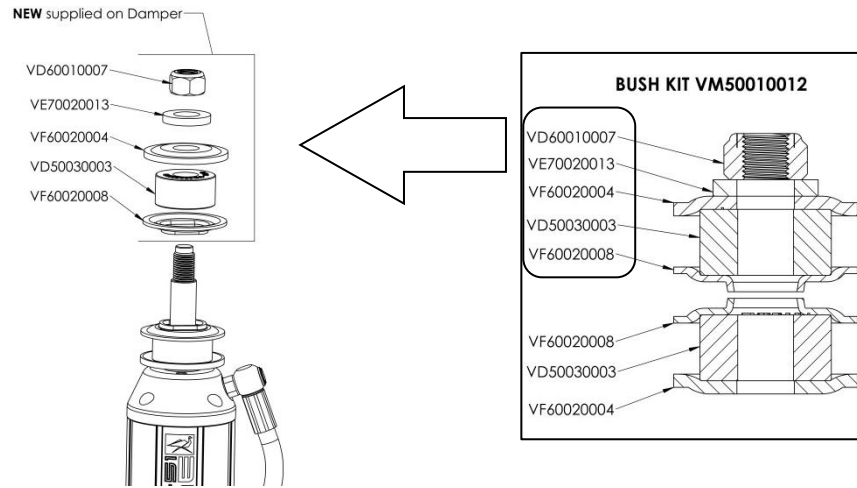
Refer to Manufacturers manual for assistance. Remove the wheel, disconnect swaybar links and remove rear spring. Only then disconnect lower control arm ball joint. Lever A-Arm downward to allow installation.

Mount the BP-51 damper using the hardware as shown.

Reinstall any parts disconnected or removed.

Torque all OE fasteners to manufactures specifications.

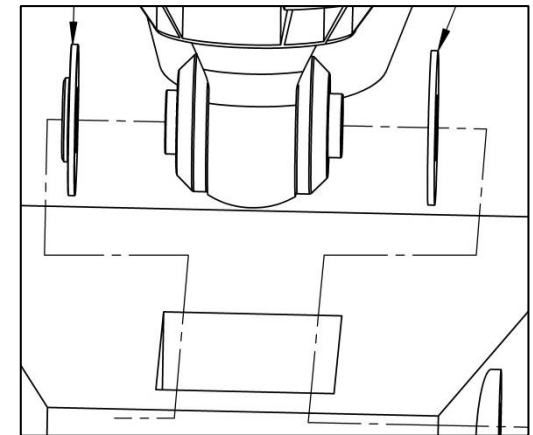
Ensure all top and bottom mounting hardware is securely fastened.



Top Mount

Fit the top mount such that the hose leaving the damper is pointing towards the Front of the vehicle. Secure the bush kit in the sequence as shown.

Insert the Top mount first into the chassis mount, then fix the lower following Bottom Mount guide below. Then fit the Location Washer VF60020008, Bush VD50030003, Retaining Washer VF60020004, and Support Washer VE70020013. Secure with the M14 nut VD600100007 as shown by the diagram.



Bottom Mount

Fit the bottom mount to the lower control arm as shown fit. Ensure the new 2mm flat washer VE70020006 is placed towards the front of the vehicle and the stepped washer VE70020017 is to the rear, the large diameter face goes against the rubber bush, the small diameter should go against the OE Mount. Secure using the original and new hardware as shown.

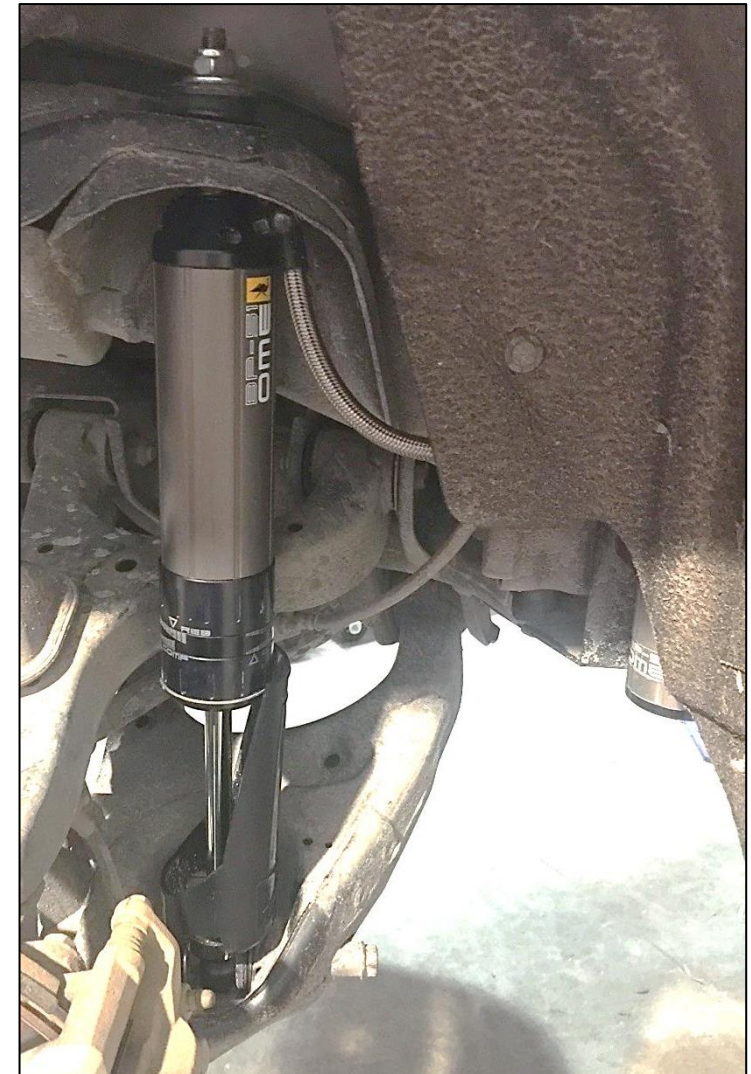
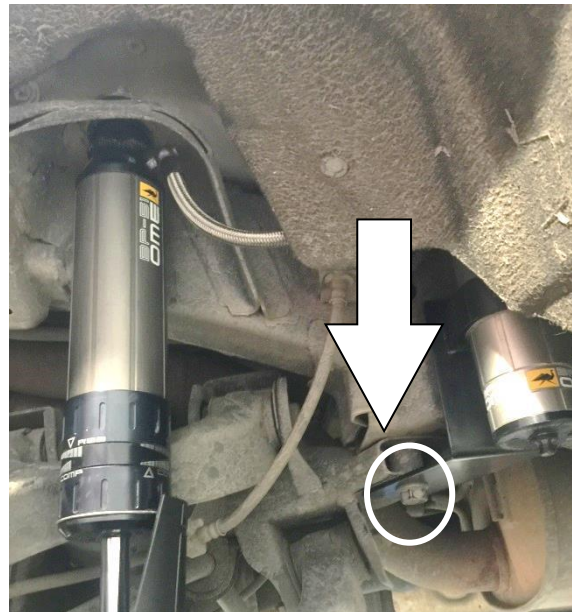
**3.0 RESI MOUNTING.
RH SHOWN**

3.1 Locate OE Bolt that's fixing rear sub-frame to Chassis, Remove one side at a time only.

3.2 Fix new Resi racket ensuring hose has no kinks.

IMPORTANT:

Torque Bolt to 240Nm (177ft-lbs)



DAMPING ADJUSTMENT
DAMPING ADJUSTMENT

These dampers have been set in the factory to be used for a vehicle with certain load.

If your load or accessory fitment differs, use the table below as a guide for recommended compression and rebound adjuster settings.

Part Number	Rear Pay Load (kg)	Compression	Rebound
BP5160019	0 - 200	0-4	0-4
	200 - 400	2-6	2-6
	400 +	4-8	6-10
BP5160058	200 - 400	2-6	2-6
	400 +	4-8	6-10

SPECIFICATIONS

BP5160019	Extended Length	554 mm
	Compressed Length	358 mm
BP5160058	Extended Length	554 mm
	Compressed Length	358 mm

SPARE PARTS

Refer to Service and Parts Manual section:

- For BP5160026 see **BP-51 S&P 3.1-BP5160019**
- For BP5160026 see **BP-51 S&P 3.1-BP5160058**

BP5160019 & BP5160058

