

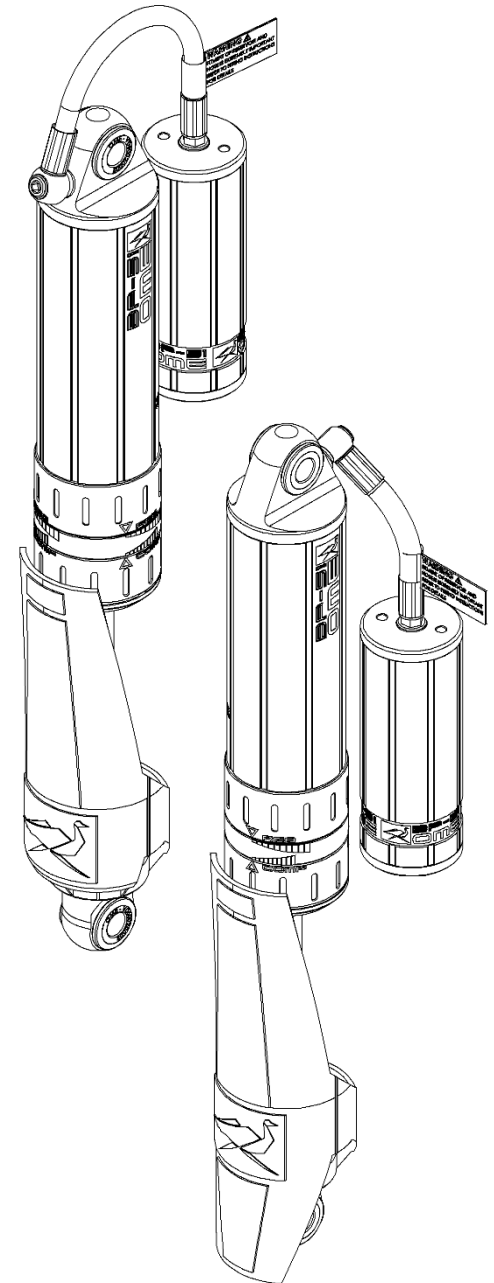
BP5190016 & BP5160048

ISUZU DMAX / HOLDEN COLORADO REAR

WARNING

- ◆ This product must be installed exactly as per these instructions using only the hardware supplied.
- ◆ In the event of damage to any suspension component, contact your nearest authorised ARB stockist. Repairs or modifications to the suspension system components must not be attempted.
- ◆ Do not use this product for any vehicle make or model, other than those specified by ARB.
- ◆ Do not remove labels from suspension components.
- ◆ This product or its fixing must not be modified in any way.
- ◆ The installation of this product may require the use of specialized tools and/or techniques
- ◆ It is recommended that this product is only installed by trained personnel
- ◆ These instructions are correct as at the publication date. ARB Corporation Ltd. cannot be held responsible for the impact of any changes subsequently made by the vehicle manufacturer
- ◆ During installation, it is the duty of the installer to check correct operation/clearances of all components
- ◆ Work safely at all times

Note: These fitting instructions should be read in conjunction with the vehicle workshop manual.



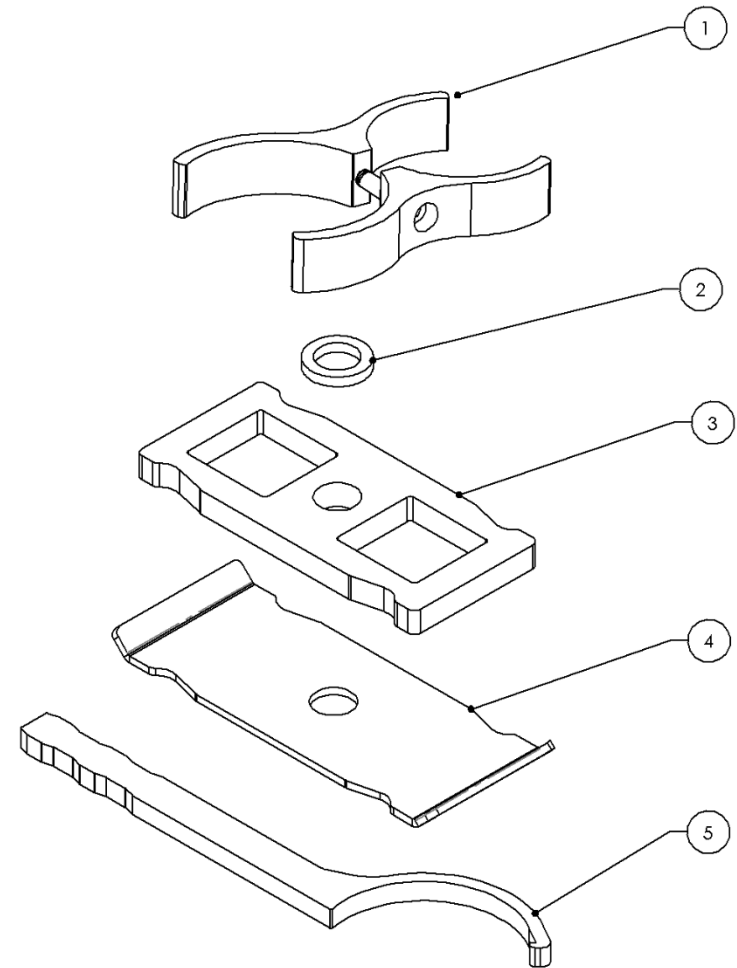
FITTING KIT CONTENTS – VM80010031

Item	Description	Qty.	Part No.
1	PIGGYBACK RESI MOUNT	2	VM20010001
2	4MM THICK WASHER	4	4584419
3	PACKER 60X134X10	6	5848494
4	PACKER LEAF BUMP STOP BASE	2	5848495
5	TOOL: ADJUSTER TOOL	1	VC10010071
	F/INST BP-51: DMAX REAR	1	VM90010051
	MANUAL: OWNERS MANUAL	1	VM90020001

REAR SUSPENSION DAMPER SELECTION

The Isuzu D-Max and Holden Colorado use a combination of parts common to both vehicles and unique to both vehicles. Please see table below for damper selection.

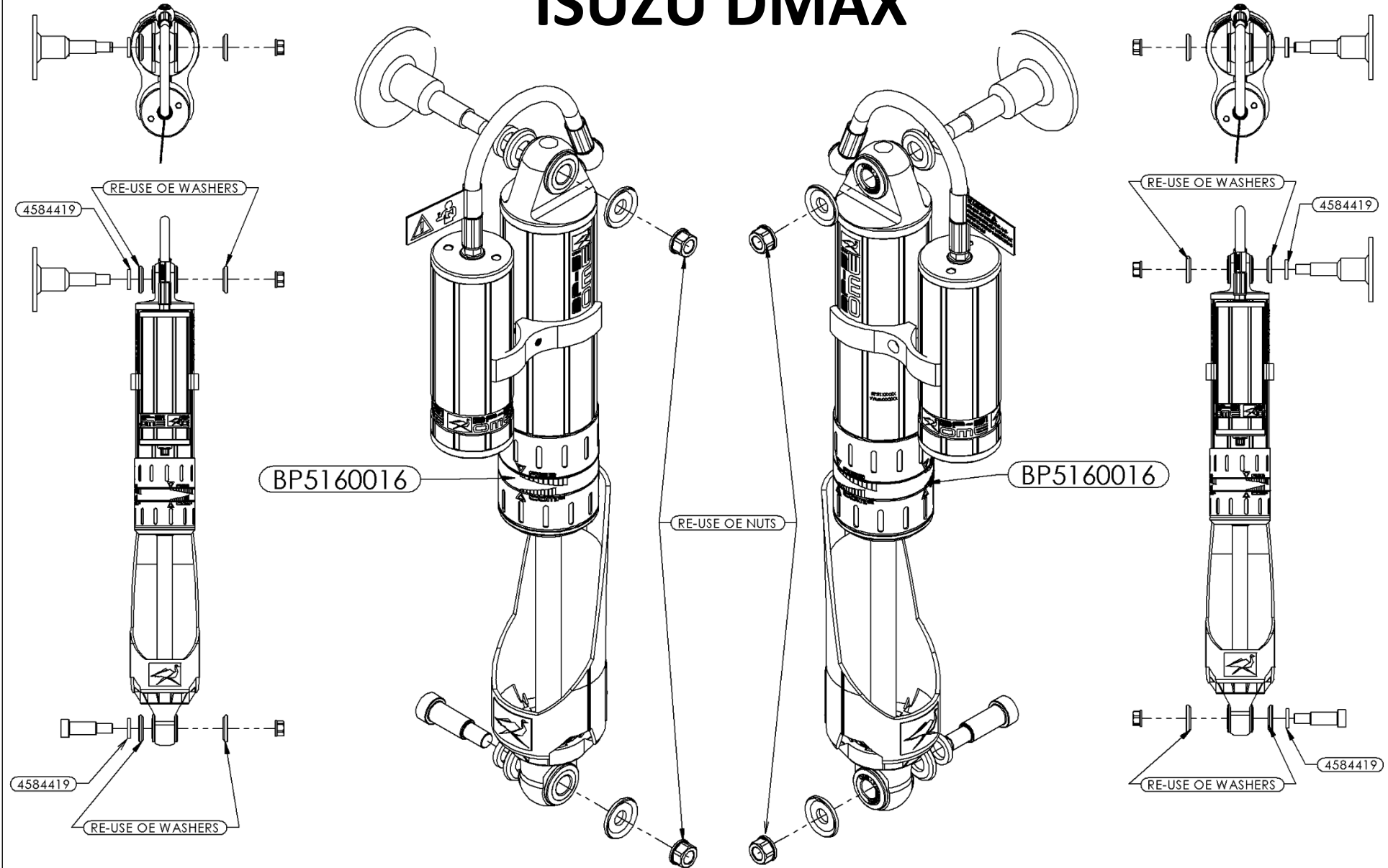
	L	R
D-MAX	BP5160016	BP5160016
COLORADO	BP5160016	BP5160048



LHS

ISUZU DMAX

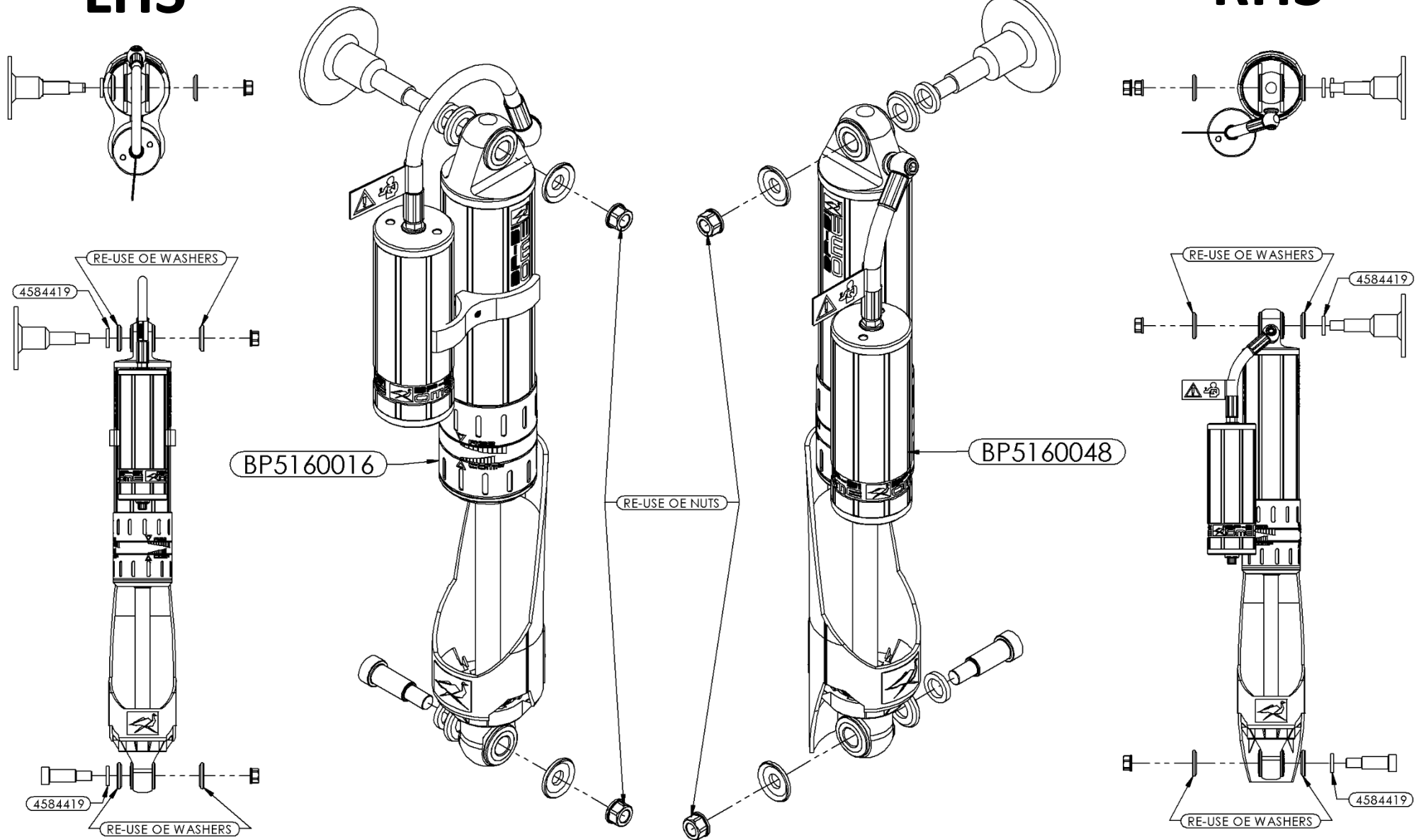
RHS



LHS

HOLDEN COLORADO

RHS



BUMP STOP SPACERS

VEHICLE PREPARATION

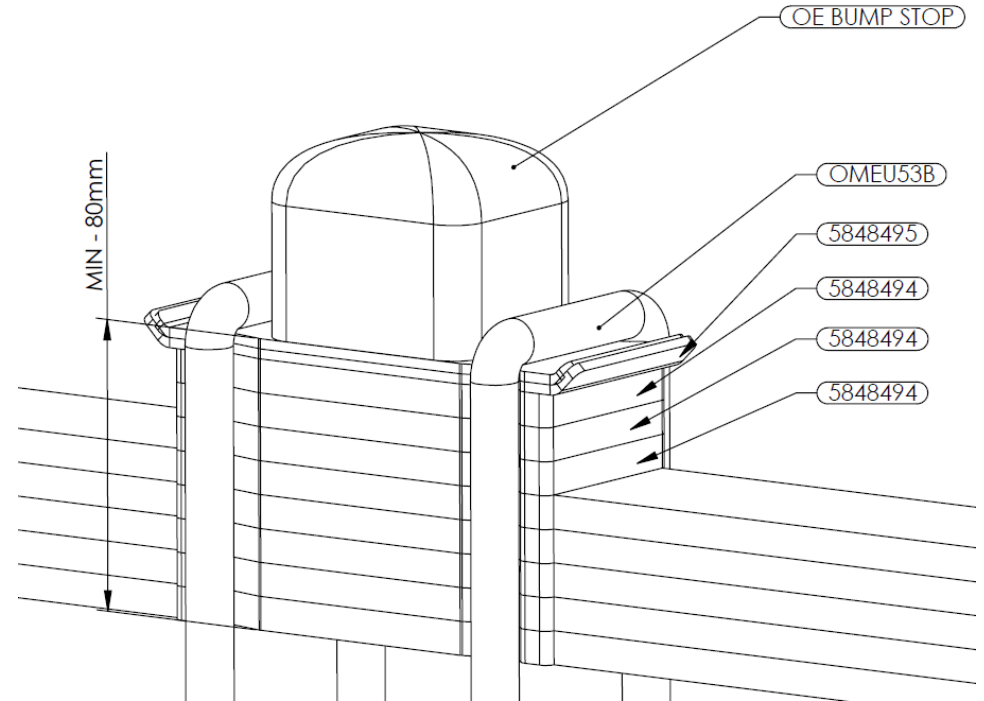
BUMP STOP SPACERS

Using the table below add bump stop packers (5848494) to achieve the minimum bump stop spacing of 80mm

Leaf Spring No#	5848495	5848494	Approx. Total
EL108R	1	3	81mm
EL109R	1	2	82mm
EL110R	1	1	83mm
ELO72R	1	3	86mm
ELO73R	1	2	84mm
ELO74R	1	2	82mm

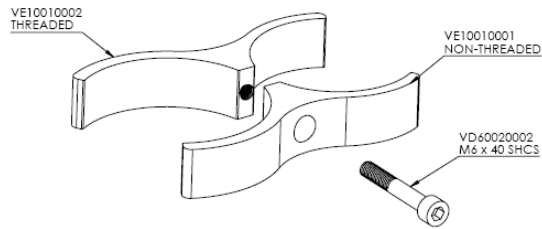
If using an extra leaf on springs above, remove one 5848494 packer.

NOTE: Leaves not to scale



DAMPER PREPARATION

Fit the Resi to the BP-51 using VM20010001.



BP5160016

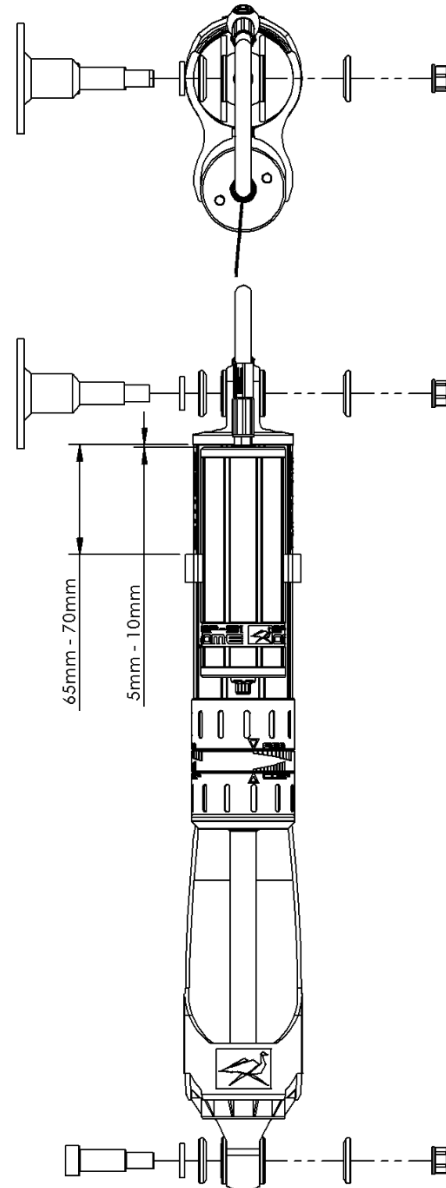
Fit the Resi such that the hose assembly arcs straight over the top of the BP-51 and piggy-backed by VM20010001.

BP5160048

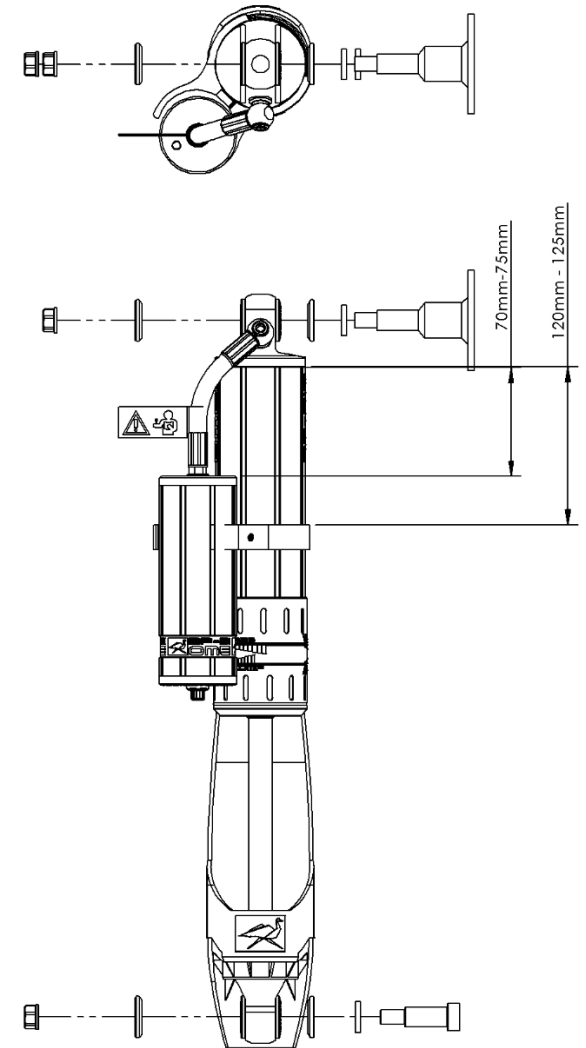
Fit the Resi at 45 degrees to the left of rear. Piggy back using VM20010001.

Set vertical position of the Resi as shown.

BP5160016



BP5160048



DAMPER PREPARATION

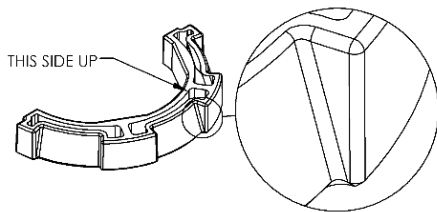
SECURING SHAFT GUARDS

The shaft guards are designed to protect the shaft from stones thrown from the front wheels and are mounted to the front side of the damper.

It is easiest to secure the shaft guards before the dampers are fitted to the vehicle.

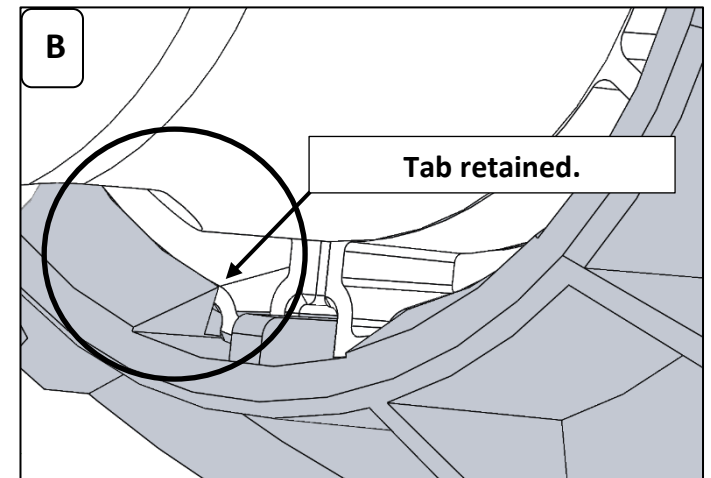
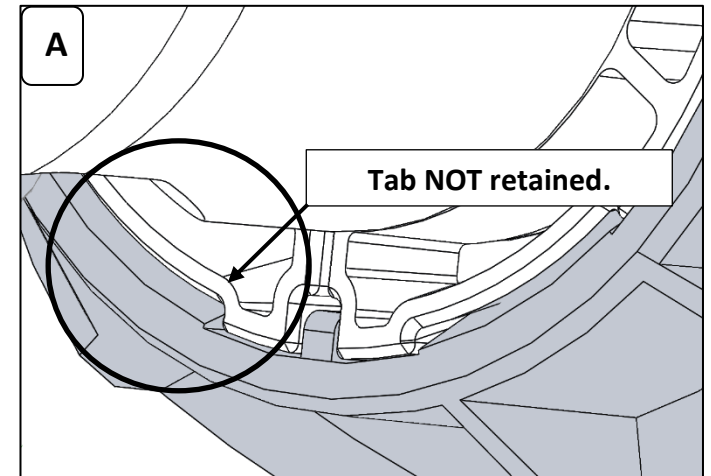
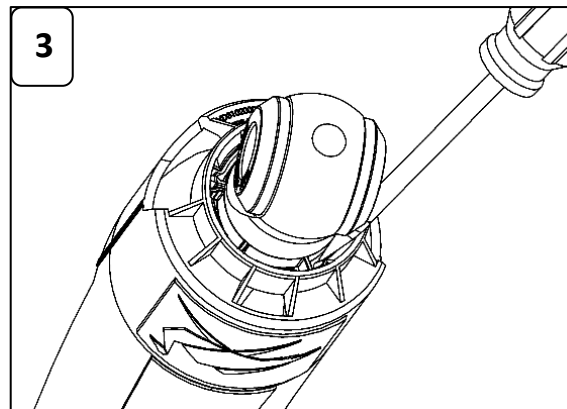
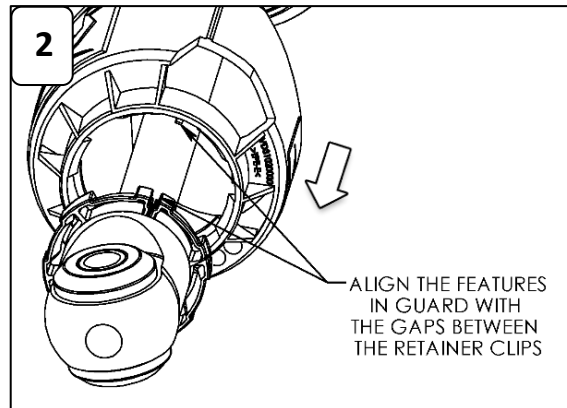
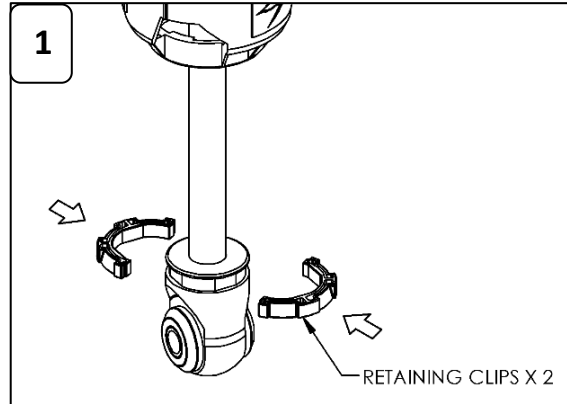
Please follow steps 1-3.

1. Fit the two retainers to the eyelet as shown. Note the orientation.



2. There are features on the shaft guard that locate in the gaps between the two retainers. Align the guard with these gaps and firmly pull the shaft guard down over the retainers to secure in place.

3. Check retainers are completely secured by guard. Use a flat blade screwdriver to poke retainers under tabs on guard if required. Refer to pictures (A) and (B) for correct fitment. **IMPORTANT: Ensure ALL tabs are fully retained.**



IMPORTANT: Ensure ALL tabs are fully retained

DAMPER MOUNTING SEQUENCE

DMAX

Left- and Right-Hand sides are the same.
Mount Resi as described on page 6
Ensure the Resi is to the rear of the vehicle

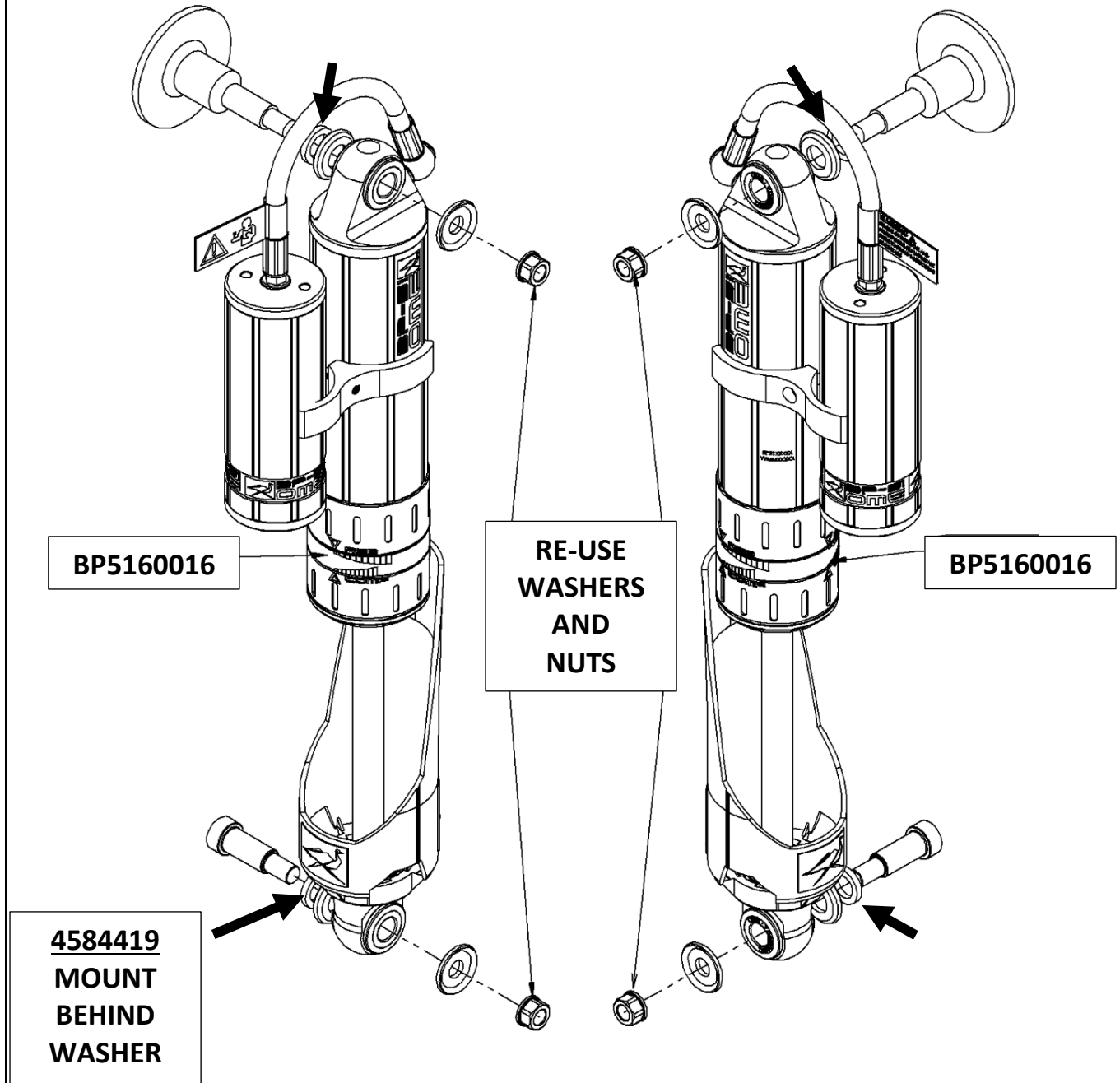
Affix the stone guards as described on page 7. Ensure they are facing towards the front of the vehicle

Fit the BP-51 to the vehicle using supplied parts in sequence as shown in the picture.

NOTE: Extra care is required with the chassis mounted top pin. Inspect the thread of the bolt and nut. If the nut is damaged discard and use a new nut.
(M12 x 1.25 nut)

Secure both top and bottom nuts and torque to

 **Mounting nuts: 85N.m**



DAMPER MOUNTING SEQUENCE

COLORADO

Mount Resi as described on page 6
Ensure the Resi is to the rear of the vehicle

Affix the stone guards as described on page 7. Ensure they are facing towards the front of the vehicle


Mount Left hand shock (BP5160016) as described in DMAX setup

Colorado right hand shock (BP5160048)

Fit the BP-51 to the vehicle using supplied parts in sequence as shown in the picture.

NOTE: Extra care is required with the chassis mounted top pin. Inspect the thread of the bolt and nut. If the nut is damaged discard and use a new nut.
(M12 x 1.25 nut)

Secure both top and bottom nuts and torque to

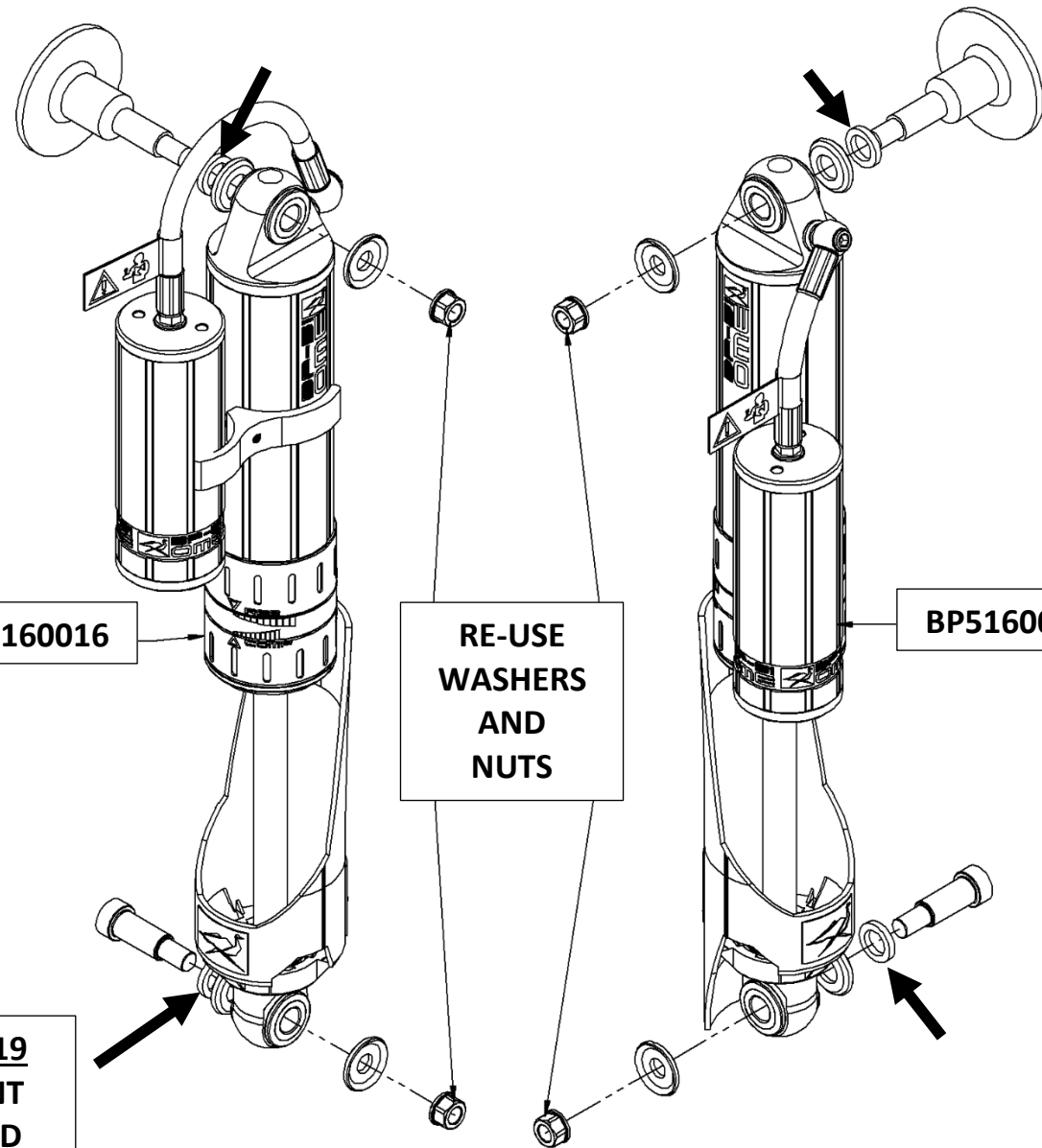
 **Mounting nuts: 85N.m**

4584419
MOUNT
BEHIND
WASHER

BP5160016

RE-USE
WASHERS
AND
NUTS

BP5160048



DAMPING ADJUSTMENT

These dampers have been set in the factory to be used for a vehicle with certain load.

If your load or accessory fitment differs, use the table below as a guide for recommended compression and rebound adjuster settings.

Part Number	Rear Pay Load (kg)	Compression	Rebound
BP5160016	0 - 200	0-3	0-3
	200 - 400	3-6	3-6
	400 +	6-10	6-10
BP5160048	0 - 200	0-3	0-3
	200 - 400	3-6	3-6
	400 +	6-10	6-10

SPECIFICATIONS

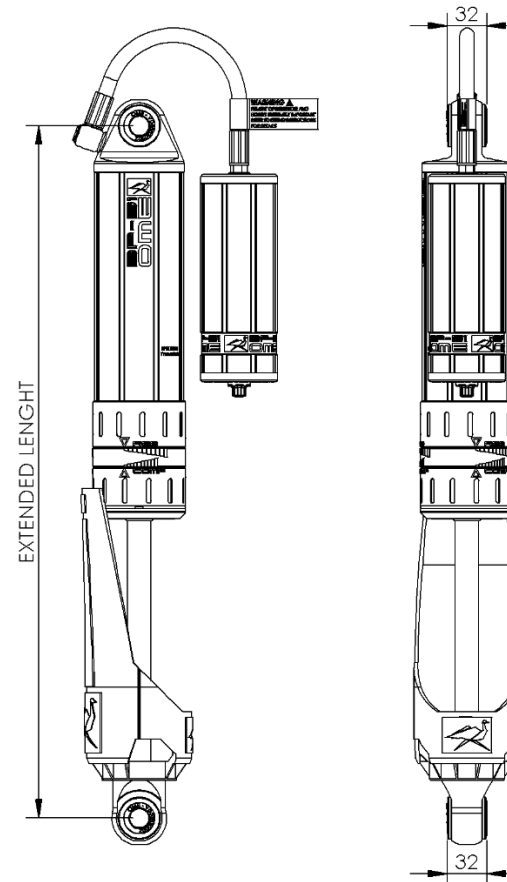
BP5160016	Extended Length	558 mm
	Compressed Length	362 mm
BP5160048	Extended Length	558 mm
	Compressed Length	362 mm

SPARE PARTS

Refer to Service And Parts Manual section:

- For BP5160016 see **BP-51 S&P 3.1-BP5160016**
- For BP5160048R see **BP-51 S&P 3.1-BP5160048**

BP5160016



BP5160048

