

# FITTING INSTRUCTIONS

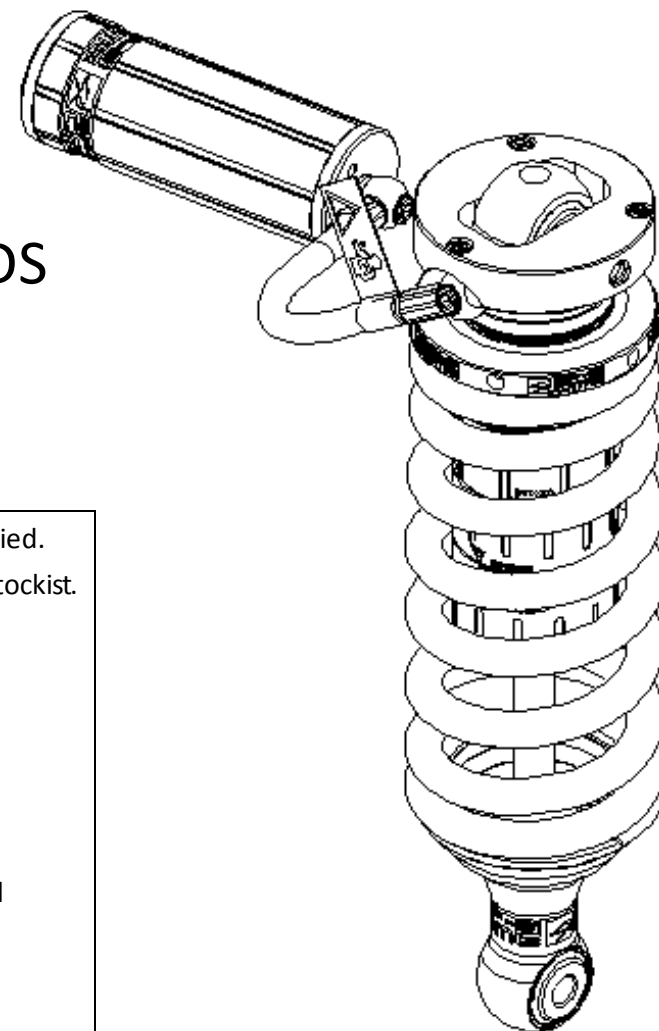
## BP5190016L & BP5190016R

### SUITS NISSAN NAVARA D23 2014- ONWARDS FRONT

#### WARNING

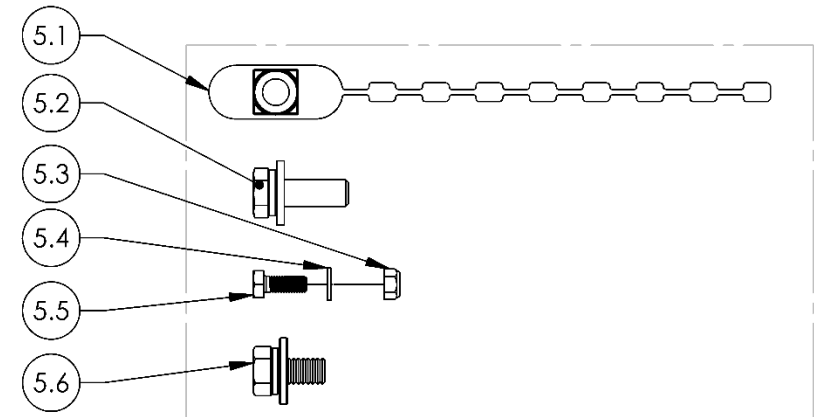
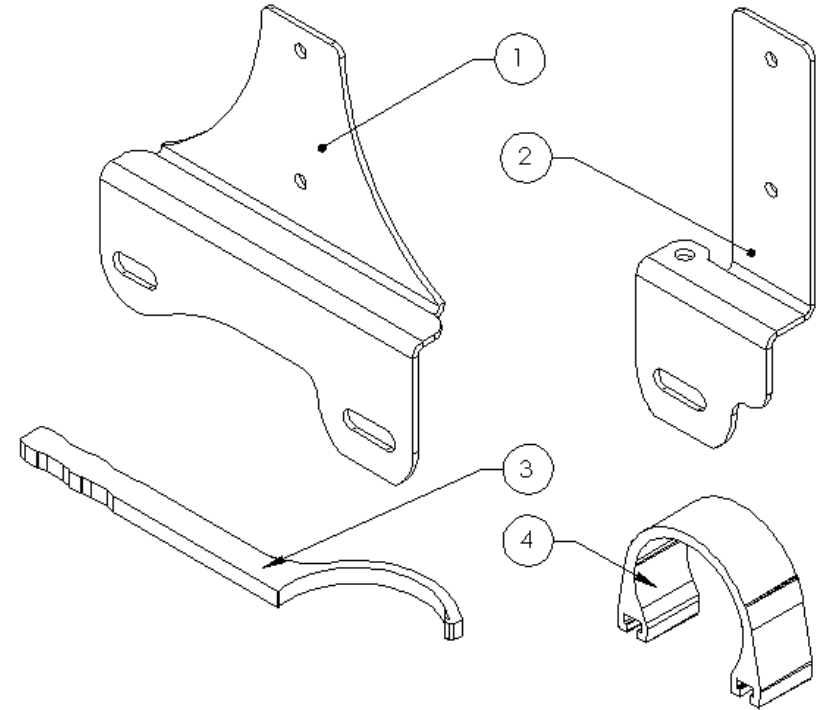
- ◆ This product must be installed exactly as per these instructions using only the hardware supplied.
- ◆ In the event of damage to any suspension component, contact your nearest authorised ARB stockist. Repairs or modifications to the suspension system components must not be attempted.
- ◆ Do not use this product for any vehicle make or model, other than those specified by ARB.
- ◆ Do not remove labels from suspension components.
- ◆ This product or its fixing must not be modified in any way.
- ◆ The installation of this product may require the use of specialized tools and/or techniques
- ◆ It is recommended that this product is only installed by trained personnel
- ◆ These instructions are correct as at the publication date. ARB Corporation Ltd. cannot be held responsible for the impact of any changes subsequently made by the vehicle manufacturer
- ◆ During installation, it is the duty of the installer to check correct operation/clearances of all components
- ◆ Work safely at all times

**Note:** These fitting instructions should be read in conjunction with the vehicle workshop manual.



## FITTING KIT CONTENTS – VM80010047

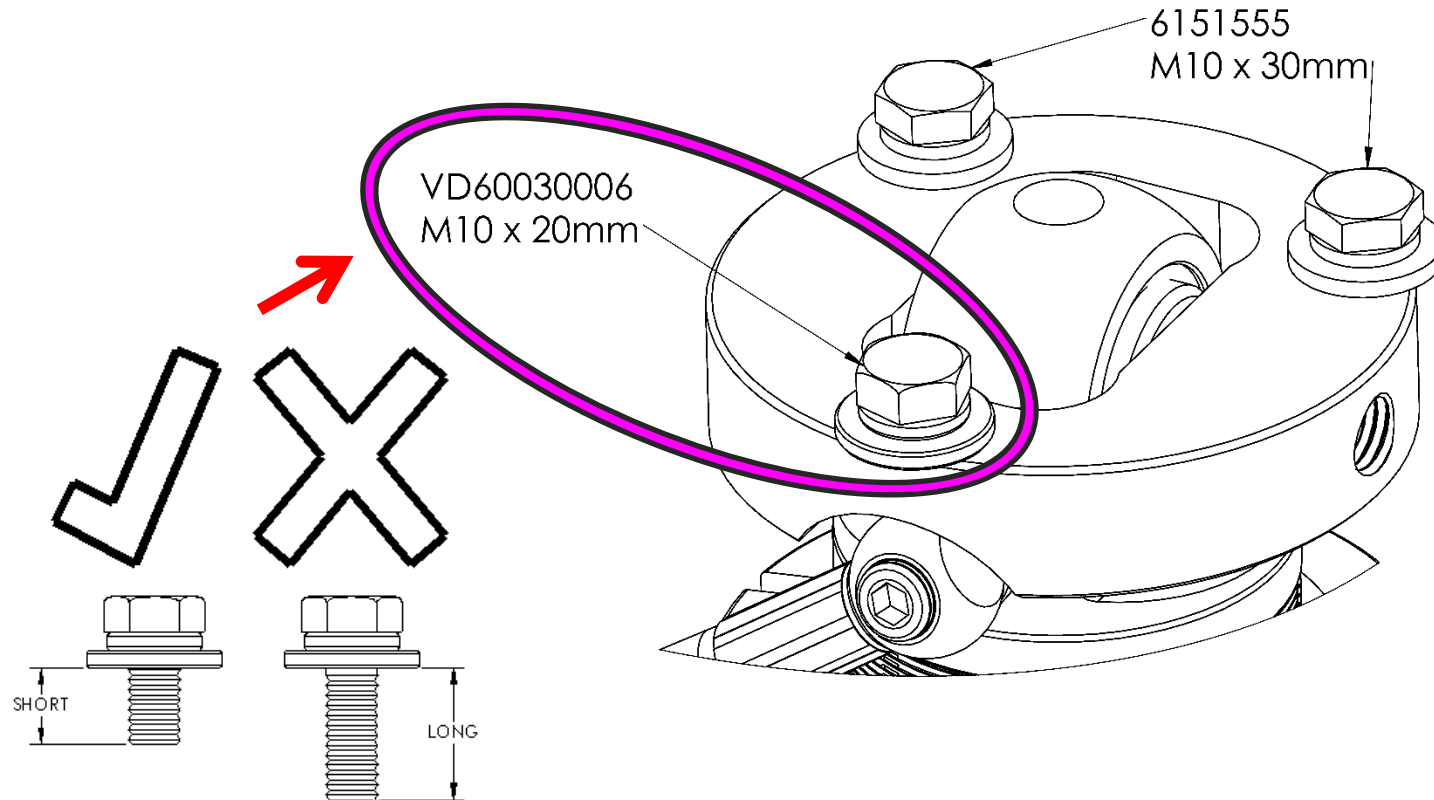
Item	Description	Qty.	Part No.
1	BRKT D23 RESI MOUNT LH	1	VF60050055
2	BRKT D23 RESI MOUNT RH	1	VF60050054
3	ADJUSTER TOOL	1	VC10010071
4	MOUNT: RESERVOIR CLAMP	2	VE10010003
5	BP51 FASTENER KIT NISSAN D23 FRONT	1	VM60010039
5.1	WELDED NUT	3	3759081
5.2	BOLT HXHD M10x1.5x30	7	6151555
5.3	NUT: M6 NYLOC	9	VD60010003
5.4	WASHER: M6	4	VE70020005
5.5	BOLT: M6 X 1.0 X16	4	VD60030003
5.6	BOLT HXHD M10x1.5x30	2	VD60030006
7	F/INST BP-51: NISSAN D23 FRONT	1	VM90010057
8	MANUAL: OWNERS MANUAL	1	VM90020001





# CAUTION!

Ensure VD60030006 M10 x 20mm SEMS is installed above hose fitting.  
Failure to do so will result in severe DAMAGE to the BP-51



## DAMPER PREPARATION (SPRING PRE-LOAD ADJUSTMENT)

Before fitment, the spring preload may need to be adjusted to suit your front accessory fitment and desired ride height.

**Use workshop tool kit VM80020001 to aid spring adjustment.**

Refer to BP-51 Service and Parts Manual 1.2\_Coilover Spring Adjustment for more detail.

The preload is set at the factory to 5mm as shown by the diagram. This aims to achieve around 20mm increase in ride height over OE with no accessories fitted to the vehicle.

Preload must be set before the strut assembly is fitted to the vehicle. Use a spring compressor to compress the spring, loosen the pinch bolt (1) on the preload ring and adjust (2) to the desired setting (See table below).

Tighten the pinch bolt and remove the strut assembly from the spring compressor.

As a guide, set the preload as specified below to achieve around 20mm increase in ride height over OE.

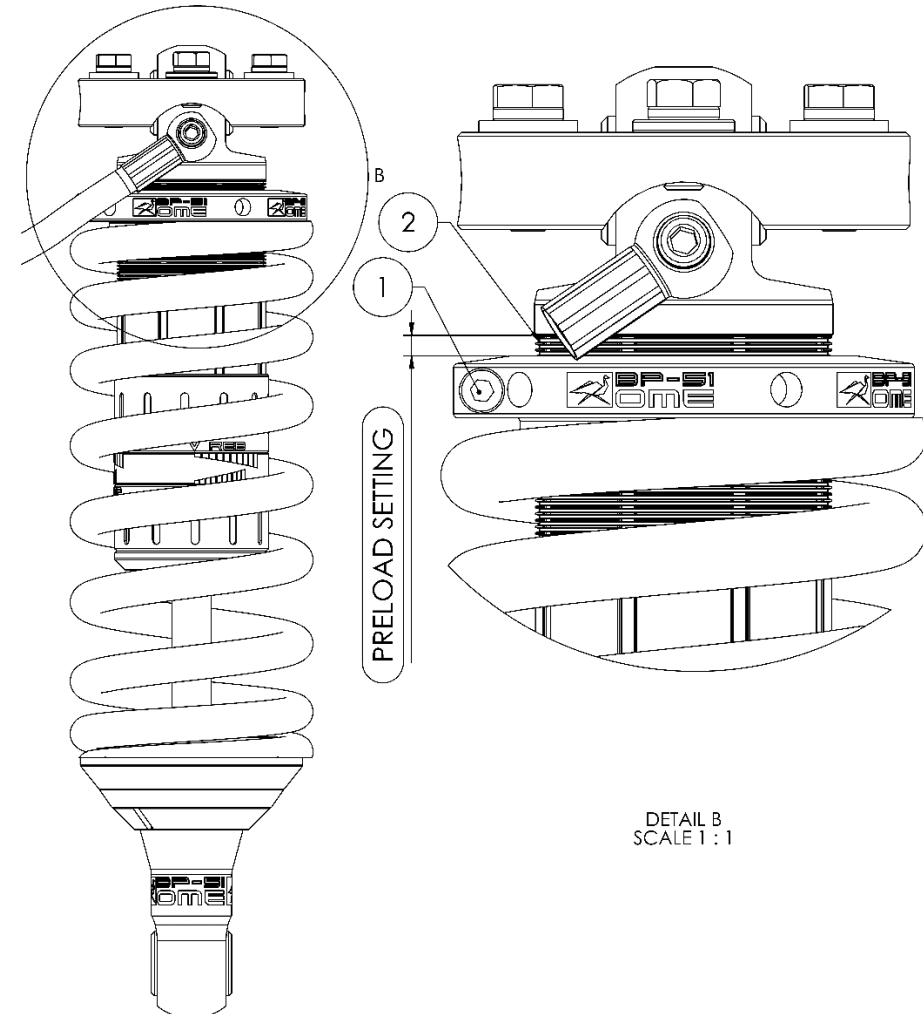
Front Accessories	Preload (mm)
Bar, Winch, UVP +	15-20
Bar & Winch	10-15
Bar only	5-10
No accessories	0-5

### NOTE:

Due to Variation in OE production, the desired lift at suggested preload can change. Minimum droop requirements for the Navara BP51 with OE components is 50mm (MINIMUM)

Spring preload must only be adjusted when a spring compressor is used to take load off the preload ring.

**DO NOT attempt to adjust preload with load on the spring when fitted to the vehicle.**

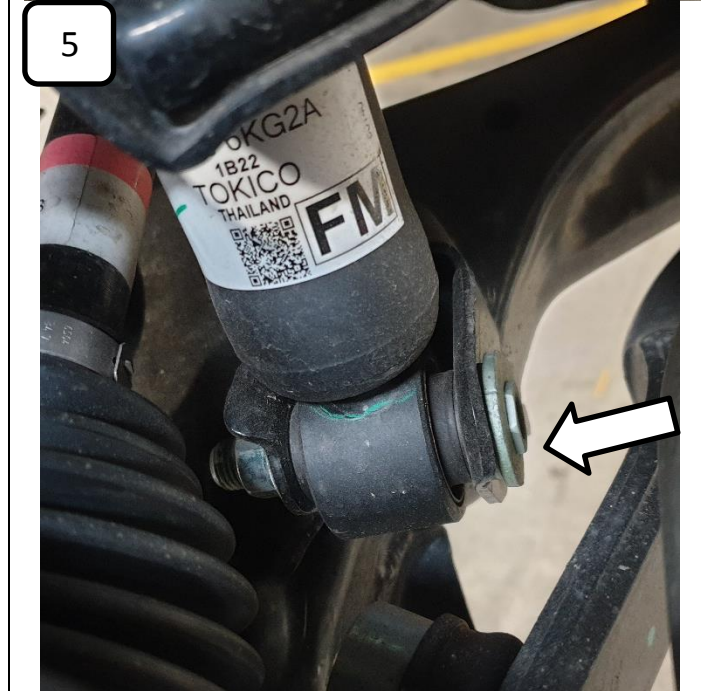
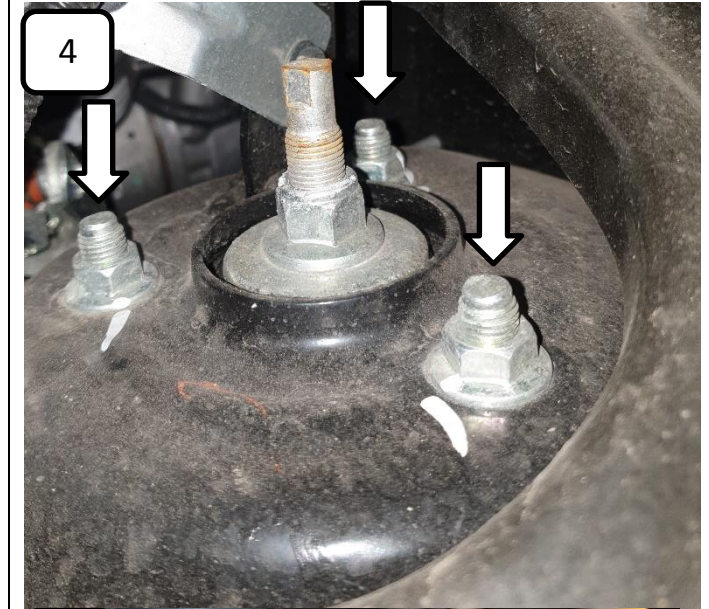
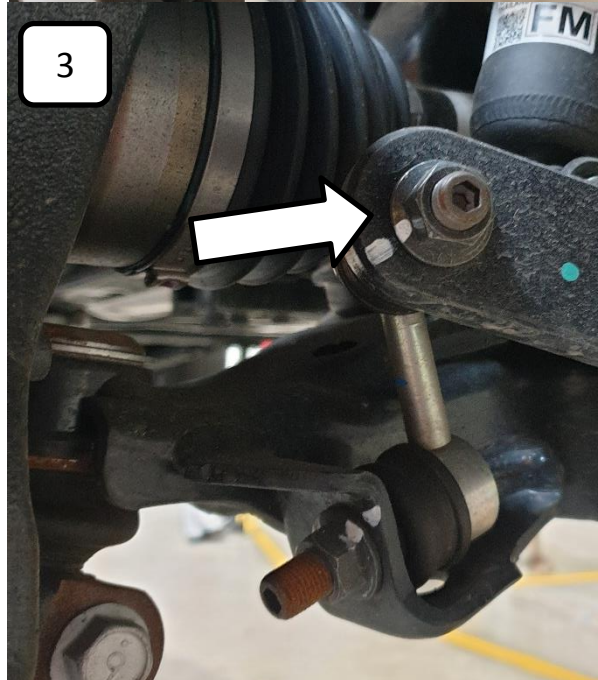
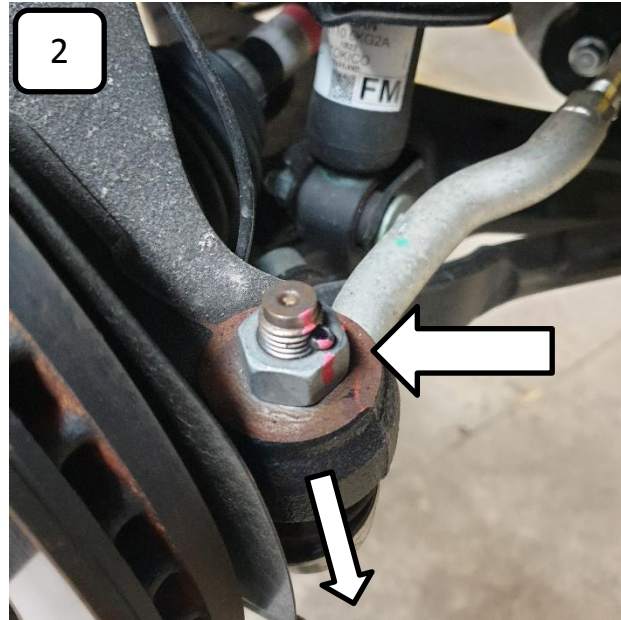


DETAIL B  
SCALE 1 : 1

## VEHICLE PREPARATION (REMOVING STRUT)

Use the following steps as a guide to remove strut. Nissan D23 Navara workshop manual may also be used where available to remove the strut.

1. Remove wheel.
2. Remove the tie rod from the steering knuckle
3. Detach the sway bar link.
4. Remove top mounting nuts (X3).
5. Remove the lower mounting nut.
6. Remove OE strut.



## DAMPER MOUNTING SEQUENCE

The Left-Hand and Right-Hand sides are the same with the exception of the way the hose exits the damper.

L and R is etched on the damper part number.

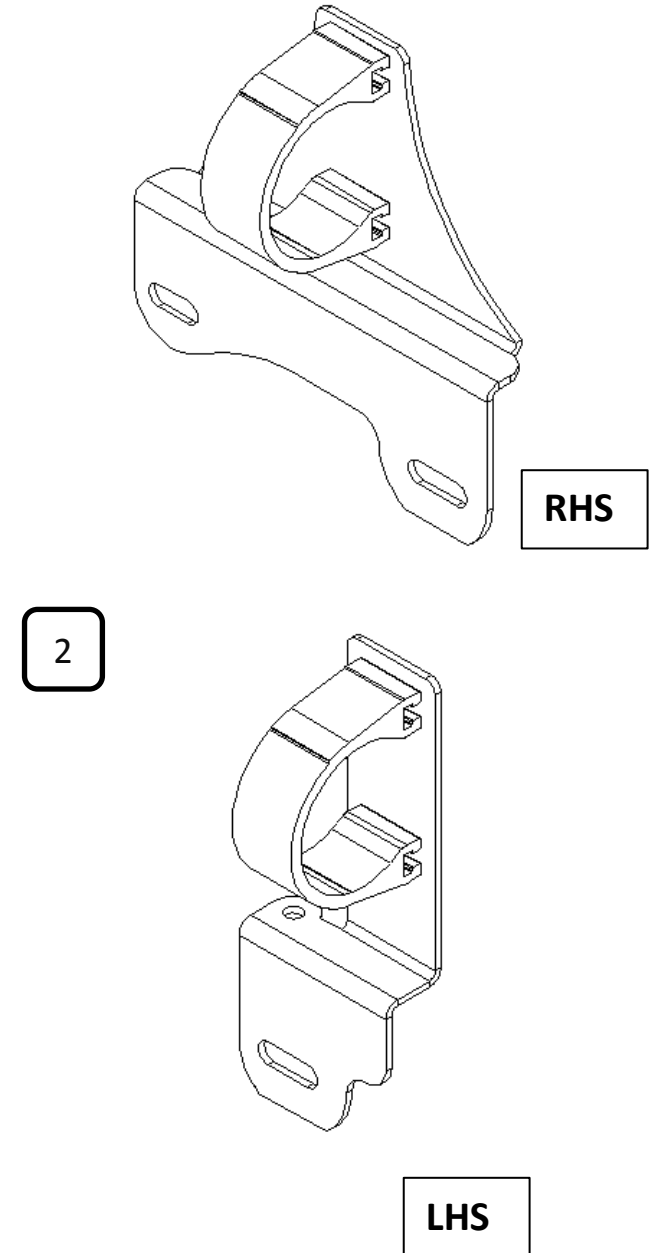
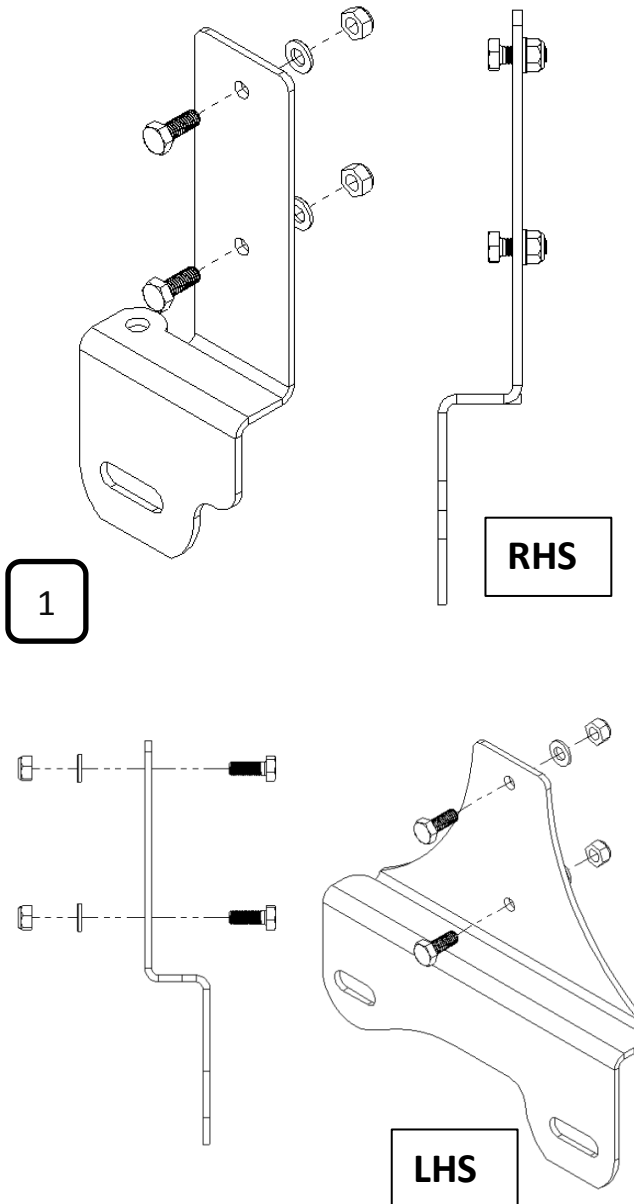
When mounted in the vehicle the hose should be routed forward of the strut tower and the reservoir above the chassis rail. [See p9.](#)

### Top Mount:

1. Pre assemble the reservoir brackets as shown
2. Lightly fasten the reservoir clamp onto the bracket

**NOTE:** wheel arch liners need to be trimmed, this can be done off the vehicle or in place and either before or after you install the BP-51's

Trimming recommendation can be found on page 10



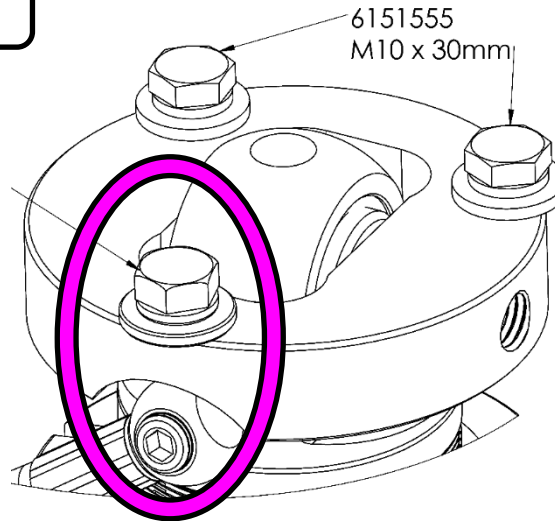
## DAMPER MOUNTING SEQUENCE

1. Install the LHS and the RHS damper. Finger tight only.

2. **CAUTION! ENSURE 2x 4584361 M10 x 4mm Washers are installed above the hose fitting. Failure to do so will result in severe DAMAGE to the BP-51**



4



5

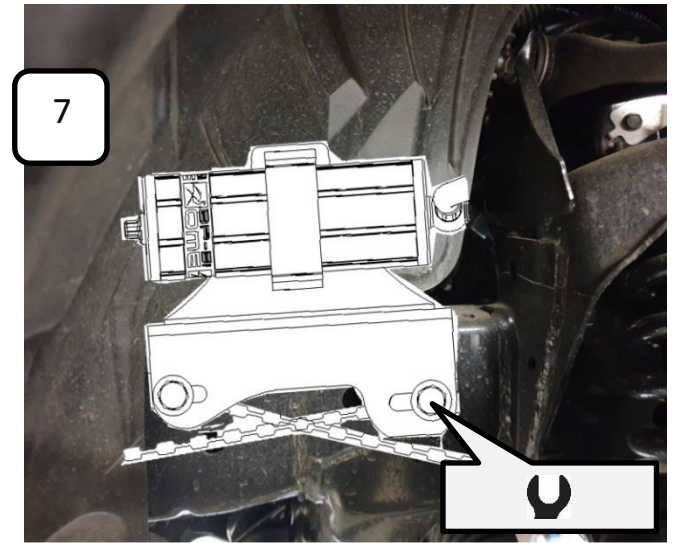
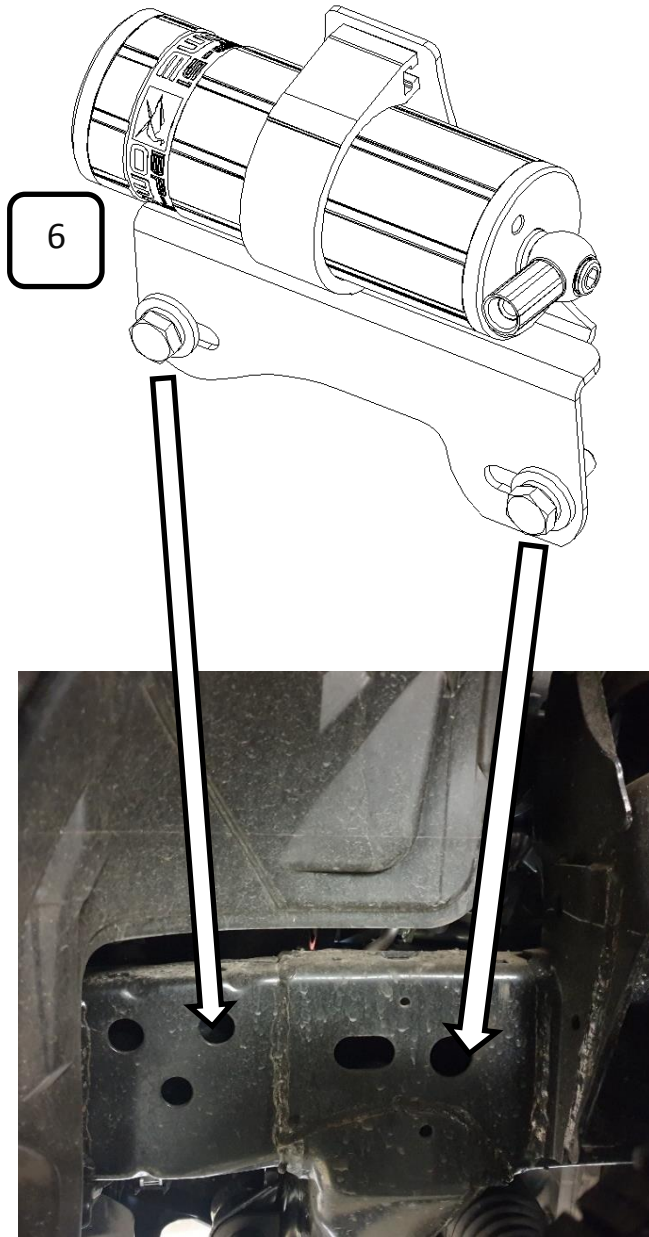


3. Insert the lower strut bolt into the lower control arm.

## Left Hand Side

6. Install the reservoir to the bracket. Lightly fasten so it can be adjusted once in place.
7. Mount the bracket to the chassis rail forward of the strut tower.

Insert 3759081 x2 into the chassis rail and secure using 6151555.



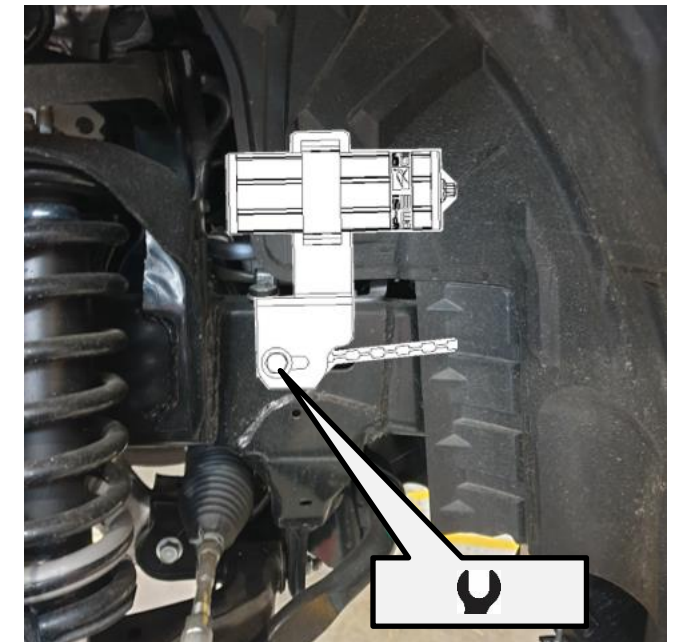
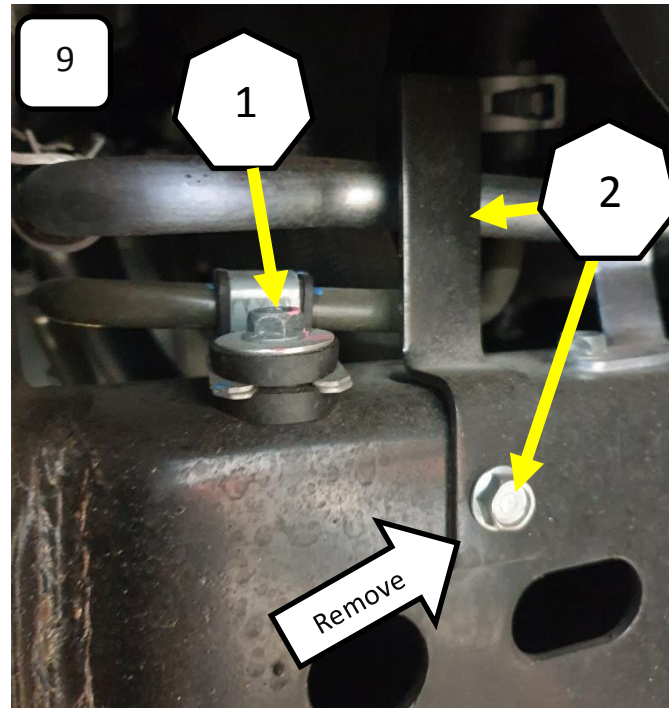
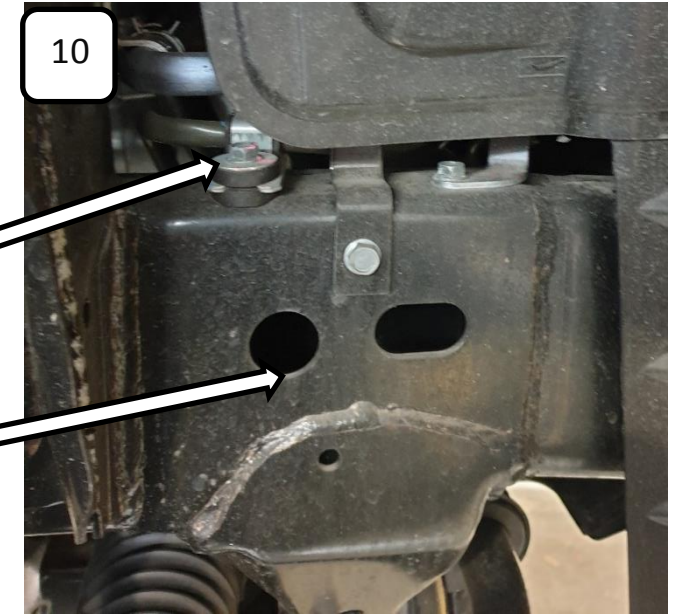
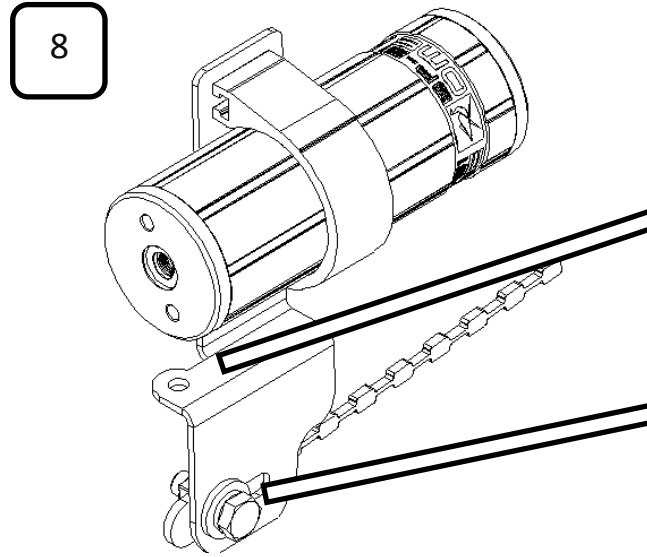
### Fastener Torque settings

Fastener	Torque N.m (ft.lbf)
Resi bracket to chassis	60 (44)
Reservoir clamp	12 (9)



## Right Hand Side

8. Install the reservoir to the bracket. Lightly fasten so it can be adjusted once in place.
9. Unbolt the hose isolator (1)  
Remove the wheel arch liner guard (2)
10. Re-use the hose isolator bolt.  
Insert 3759081 into the chassis rail and secure using 6151555.




### Fastener Torque settings

Fastener	Torque N.m (ft.lbf)
Resi bracket to chassis	60 (44)
Reservoir clamp	12 (9)
Hose isolator	12 (9)

## DAMPER MOUNTING SEQUENCE

11. Reattach all the components to the vehicle in the reverse way of detaching them.

- Lower strut bolts
- Sway bar link
- Tie rod to steering knuckle
- Top strut turret

Fastener  Torque settings	
Fastener	Torque N.m (ft.lbf)
Sway Bar Link	107 (78)
Strut to Lower Control Arm	183 (135)
Steering tie rod end to upright	50(36)
Top Shock Tower	44 (32)
Resi bracket to chassis	60 (44)

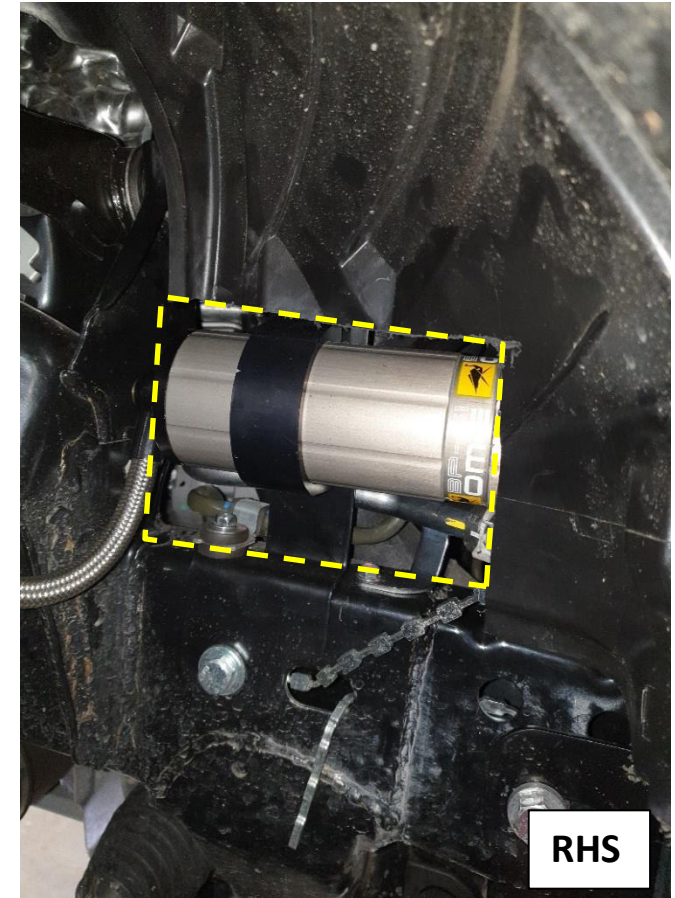
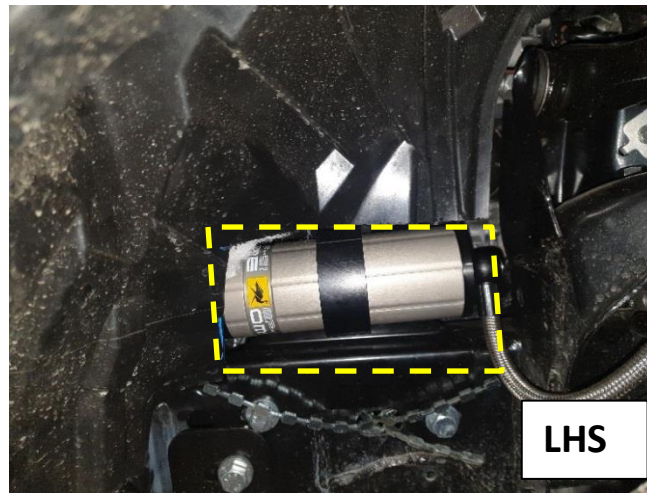
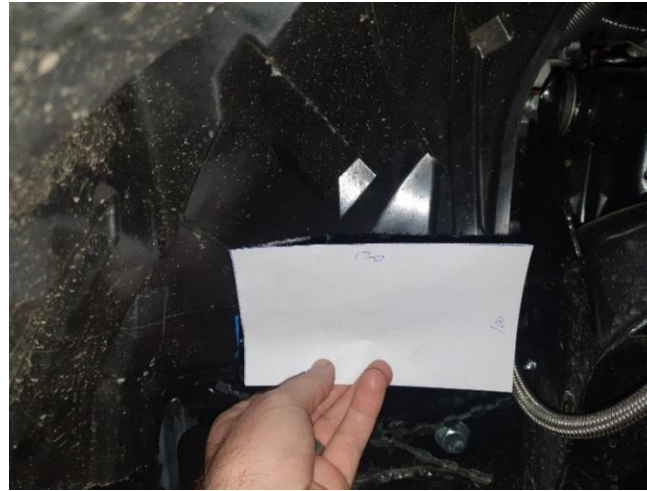
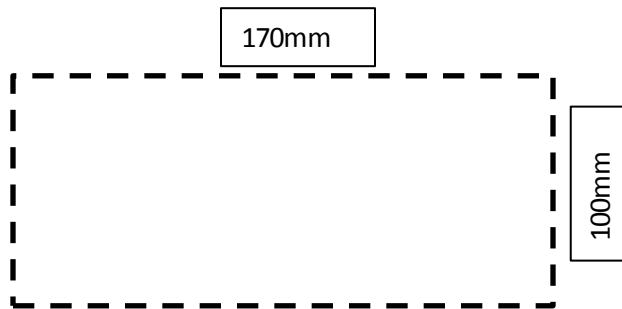


## WHEEL ARCH LINER TRIM:

To allow clearance for the BP-51 reservoir trim away a rectangular shape at the bottom of the wheel arch liner 100mm high and 170mm wide.

It is advised that you start your cut small and increase the size to suit your desired look

The wheel arch liner can be cut on the vehicle, or you can remove it and perform the cut off the vehicle



## DAMPING ADJUSTMENT

These dampers have been set in the factory to be used for a vehicle with Bull Bar and Winch fitted.

If your accessory fitment differs, use the table below as a guide for recommended Compression and Rebound adjuster settings.

Refer to the Owner's Manual for more information.

Front Accessories	Compression	Rebound
Factory setting	6	8
Bar & winch	4-8	6-10
Bar only	2-6	5-9
No accessories	0-4	4-8

## SPECIFICATIONS

1	Extended Length	429.5 mm
2	Compressed Length	334 mm

## SPARE PARTS

Refer to Service & Parts manual, section: **BP-51 S&P 3.1-BP5190016L&R.**

