

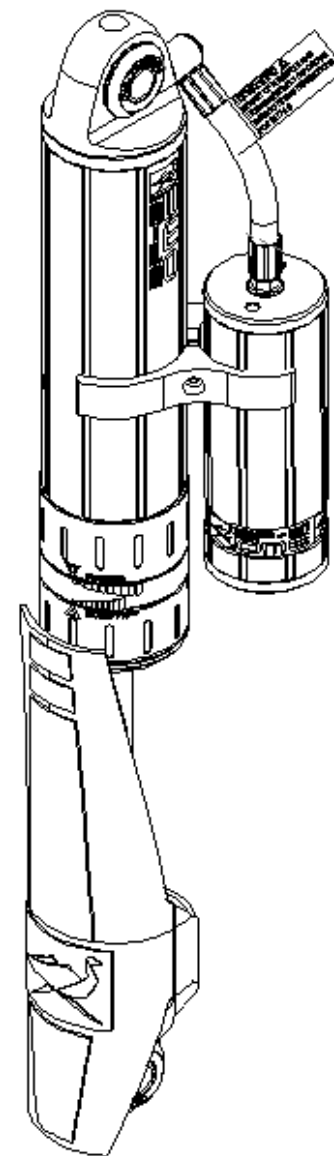
# BP5190056

## SUITS NISSAN D23 NAVARA REAR SERIES 1-5

### WARNING

- ◆ This product must be installed exactly as per these instructions using only the hardware supplied.
- ◆ In the event of damage to any suspension component, contact your nearest authorised ARB stockist. Repairs or modifications to the suspension system components must not be attempted.
- ◆ Do not use this product for any vehicle make or model, other than those specified by ARB.
- ◆ Do not remove labels from suspension components.
- ◆ This product or its fixing must not be modified in any way.
- ◆ The installation of this product may require the use of specialized tools and/or techniques
- ◆ It is recommended that this product is only installed by trained personnel
- ◆ These instructions are correct as at the publication date. ARB Corporation Ltd. cannot be held responsible for the impact of any changes subsequently made by the vehicle manufacturer
- ◆ During installation, it is the duty of the installer to check correct operation/clearances of all components
- ◆ Work safely at all times

**Note:** These fitting instructions should be read in conjunction with the vehicle workshop manual.

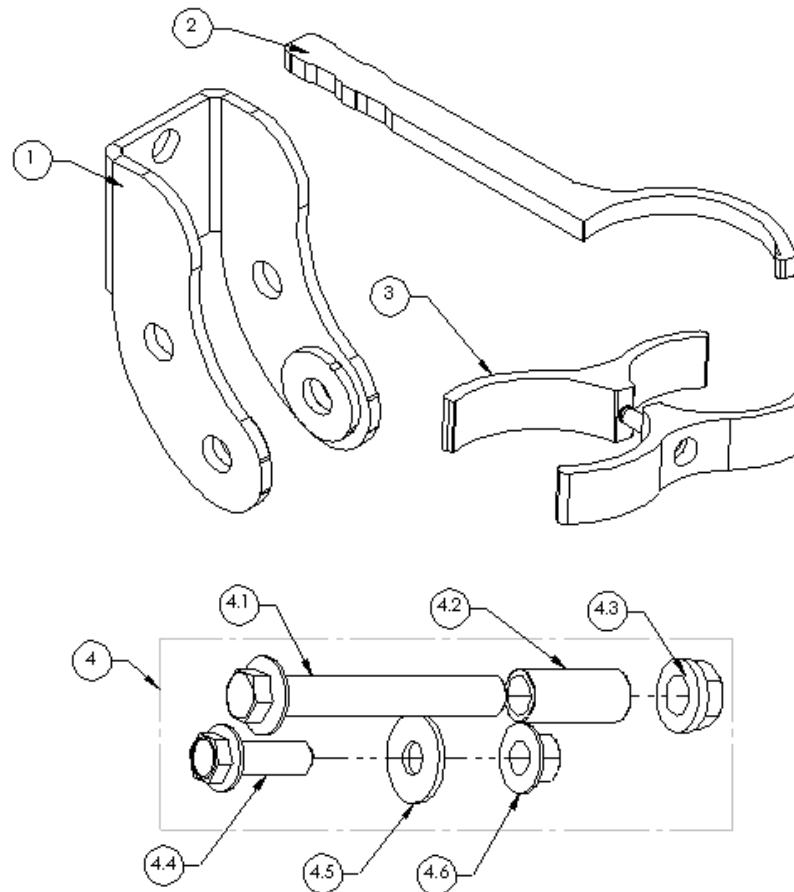


## FITTING KIT CONTENTS – VM80010048 SERIES 1-4 FIT KIT

Item	Description	Qty.	Part No.
1	MOUNT ASSY: D23 REAR SHOCK   series 1 to 4	1	VF60050049
2	TOOL: ADJUSTER TOOL	1	VC10010071
3	ASSEMBLY: PIGGYBACK RESI MOUNT	2	VM20010001
4	BP51 FASTENER KIT NISSAN D23 SERIES 3 REAR	-	VM60010040
4.1	BOLT HXHD FL M14x1.5x100	2	6152054
4.2	MOUNT: SLEEVE 141942	2	VF50141942
4.3	NUT FLANGE M14x1.5	2	6152064
4.4	BOLT HXHD FL M12x1.25x35	2	6151545
4.5	WASHER FLAT M12x31.75x2.5	2	4584410
4.6	NUT FLANGE M12x1.25	2	6152023
	F/INST: NISSAN D23 REAR	1	VM90010058
	MANUAL: OWNERS MANUAL	1	VM90020001

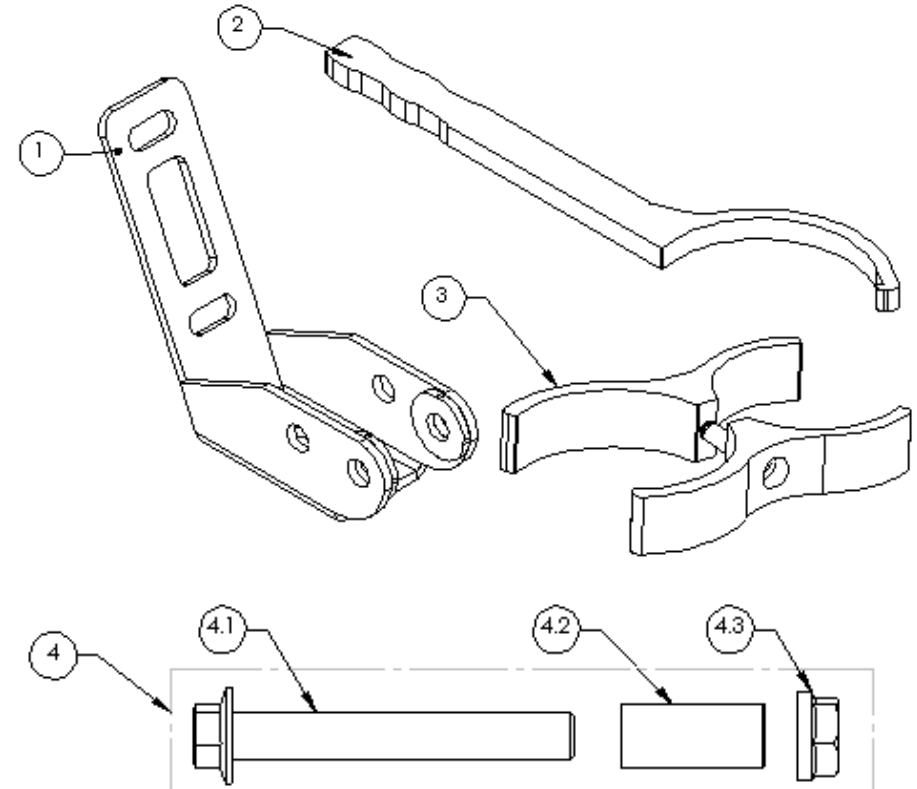
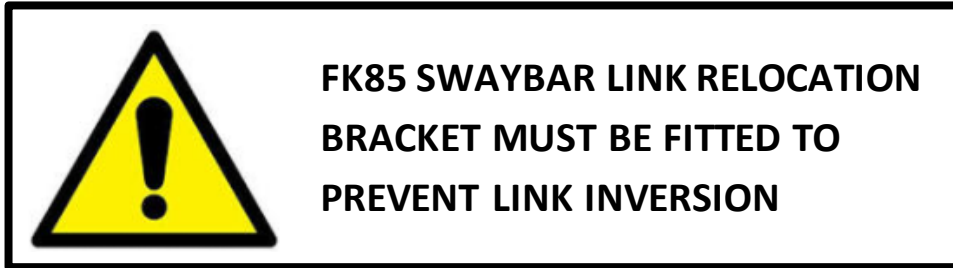


**FK85 SWAYBAR LINK RELOCATION  
BRACKET MUST BE FITTED TO  
PREVENT LINK INVERSION**

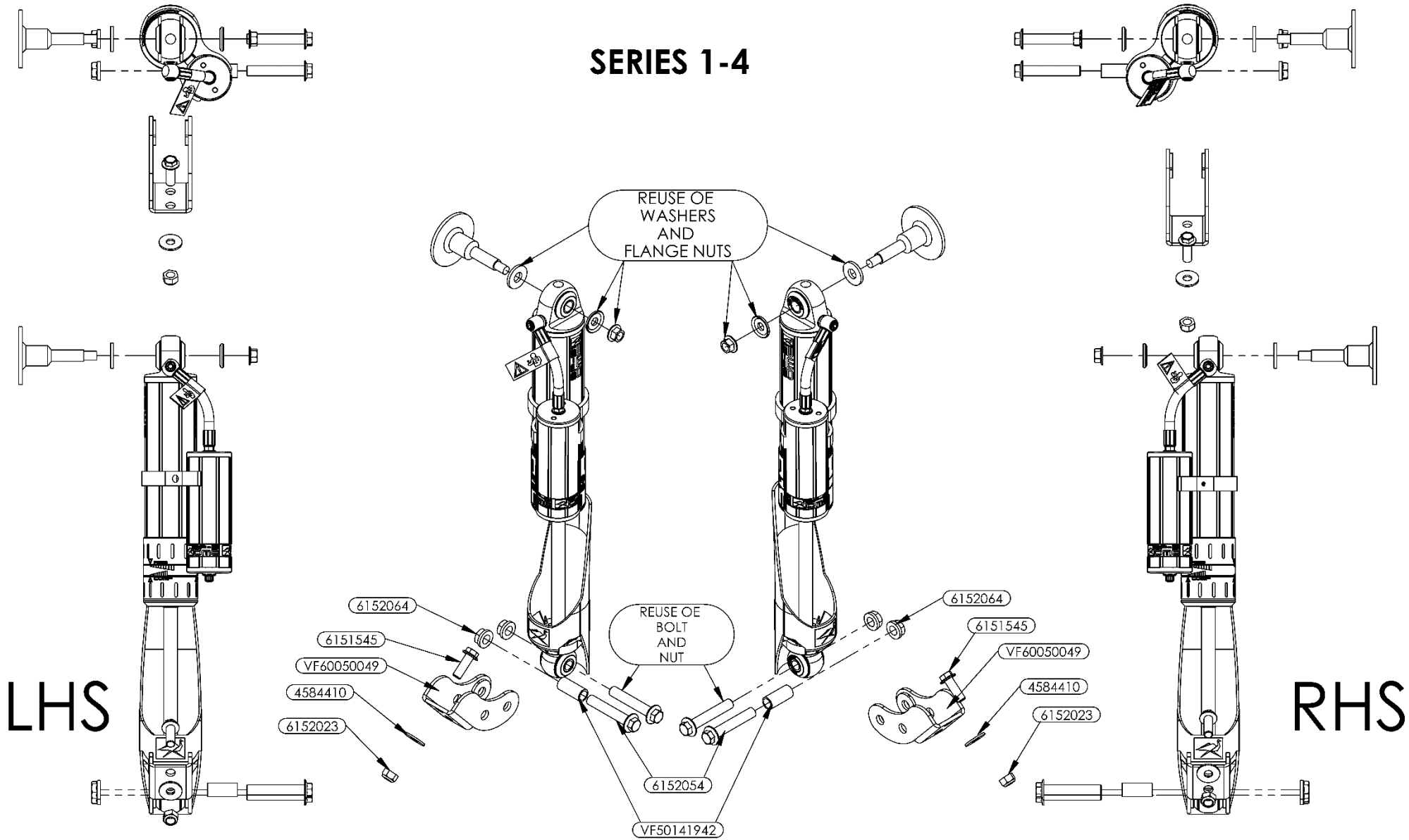


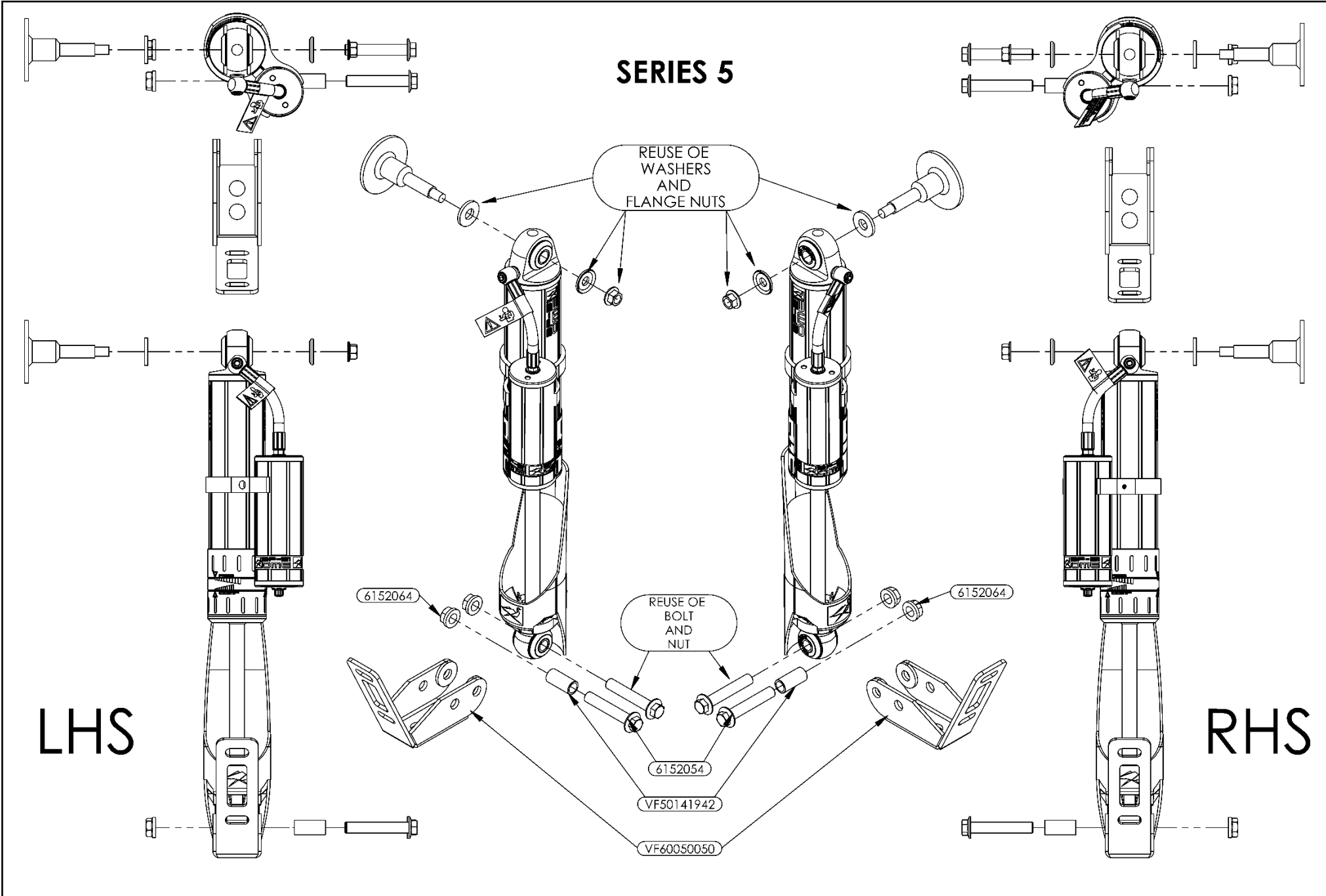
**FITTING KIT CONTENTS – VM80010049  
SERIES 5 FIT KIT**

Item	Description	Qty	Part No.
1	BRKT D23 REAR SHOCK MOUNT	2	VF60050050
2	TOOL: ADJUSTER TOOL	1	VC10010071
3	ASSEMBLY: PIGGYBACK RESI MOUNT	2	VM20010001
4	BP51 FASTENER KIT NISSAN D23 SERIES 5 REAR	-	VM60010041
4.1	BOLT HXHD FL M14x1.5x100	2	6152054
4.2	MOUNT: SLEEVE 141942	2	VF50141942
4.3	NUT FLANGEM14x1.5	2	6152064
	F/INST: NISSAN D23 REAR	1	VM90010058
	MANUAL: OWNERS MANUAL	1	VM90020001



# SERIES 1-4





## VEHICLE PREPARATION

Remove sway bar links as required by fit kit FK85  
FK85 is required for BP-51 application to avoid  
sway bar inversion.

Remove the OE shocks and set aside the OE  
fasteners for re-use.

## REAR LOWER MOUNT

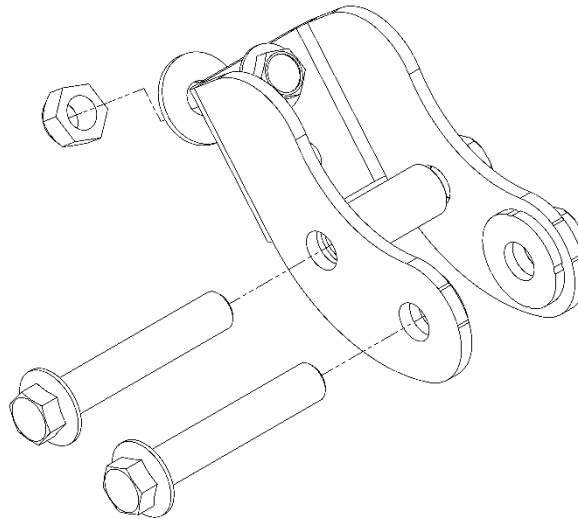
### SERIES 1-4

1. Install VF60050049 over the OE lower shock mount.
2. Secure the new bracket with M14 bolt supplied, install crush tube inside OE bracket where the OE shock was mounted
3. Install M12 bolt to the rear of the mount

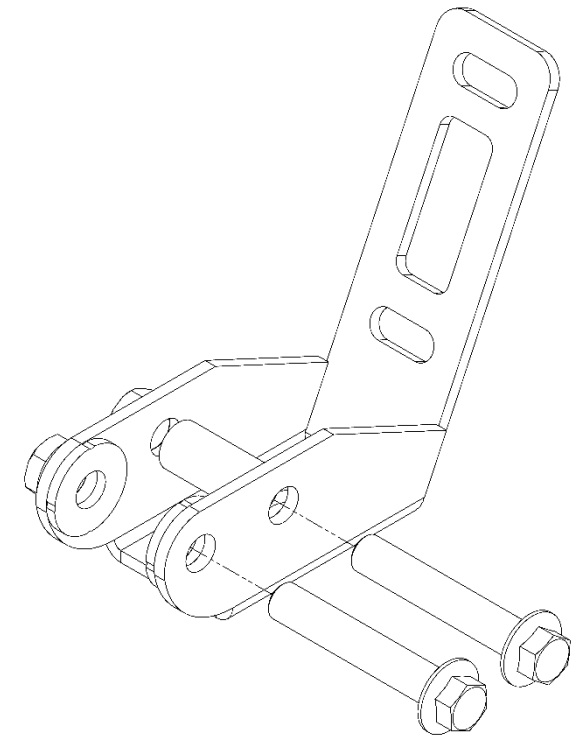
### SERIES 5

1. Install VF60050050 over the OE lower shock mount.
2. Secure the new bracket with M14 bolt supplied, install crush tube inside OE bracket where the OE shock was mounted

Series 1-4



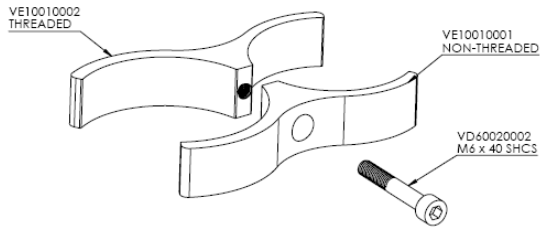
Series 5



## DAMPER PREPARATION

### RESERVOIR MOUNTING

Fit the reservoir to the BP-51 using VM20010001.



Fit the reservoir such that the hose assembly is rearward.

Set vertical position of the reservoir as shown to ensure stone guard does not impact reservoir bracket.

### DAMPER MOUNTING SEQUENCE

#### ALL variants

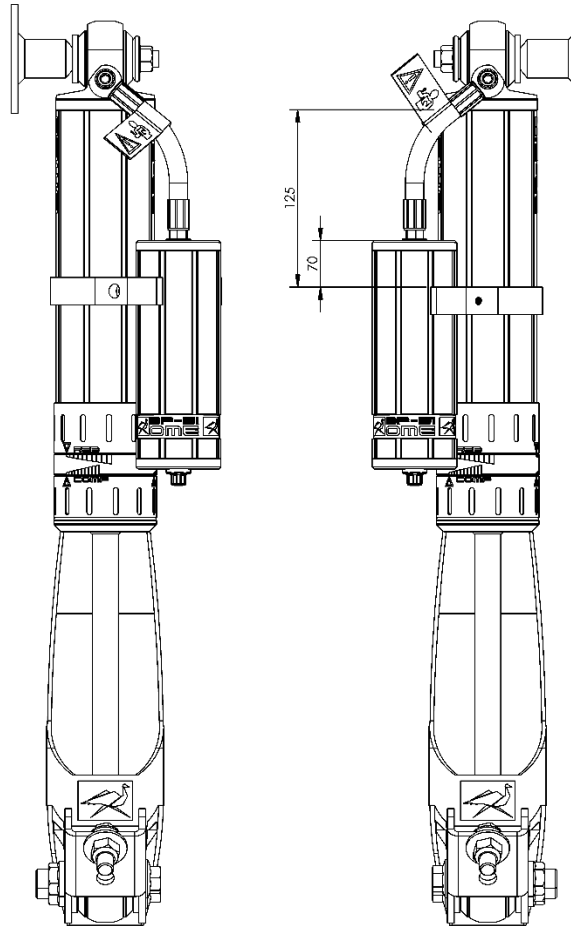
Mount damper such that the reservoir is to the rear of the vehicle

Note reservoir position as per page 4 and 5

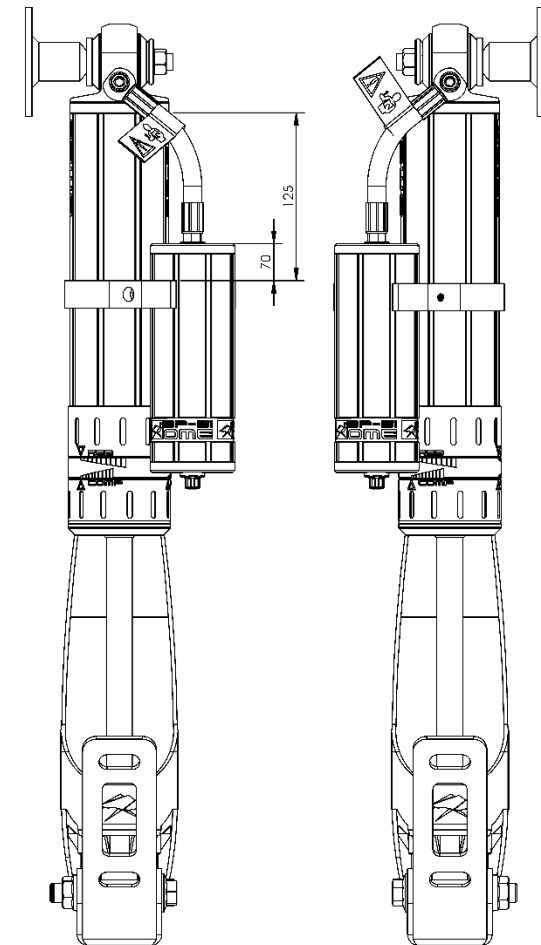
Fit the damper top mount to the vehicle using OE and supplied parts in sequence as shown in the picture.


Torque to specifications

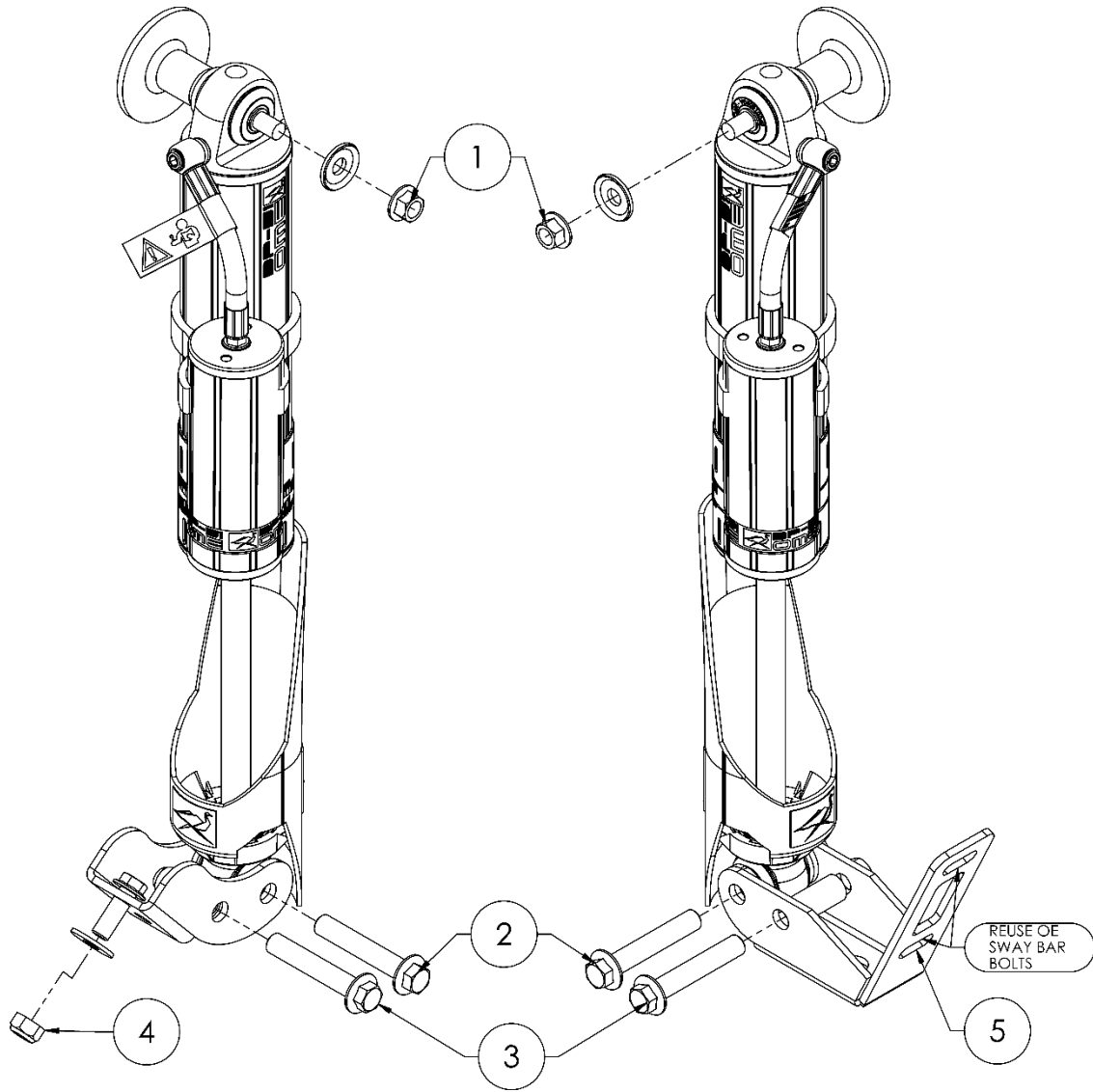
## BP5160056 Series 1-4



## BP5160056 Series 5



Fastener  Torque settings		
	Fastener	Torque N.m (ft.lbf)
1	OE top chassis bolt	45 (33)
2	OE bottom shock bolt	205 (151)
3	M14 flange bolt	200 (147)
4	M14 bolt (Series 1-4)	95(70)
5	Sway bar saddle to diff (Series 5)	110(81)





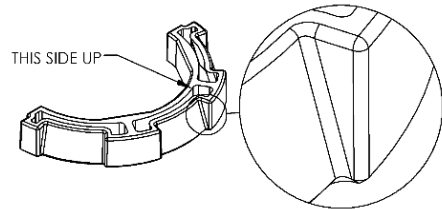
## SECURING SHAFT GUARDS

The shaft guards are designed to protect the shaft from stones thrown from the front wheels and are mounted to the front side of the damper.

It is easiest to secure the shaft guards before the dampers are fitted to the vehicle.

**Please follow steps 1-3.**

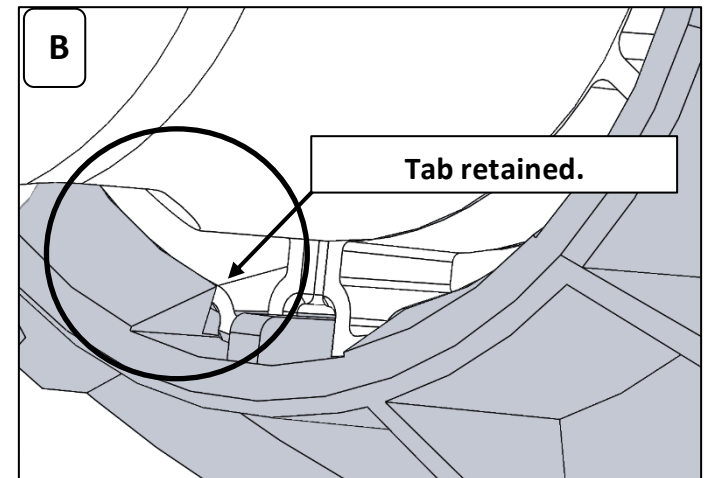
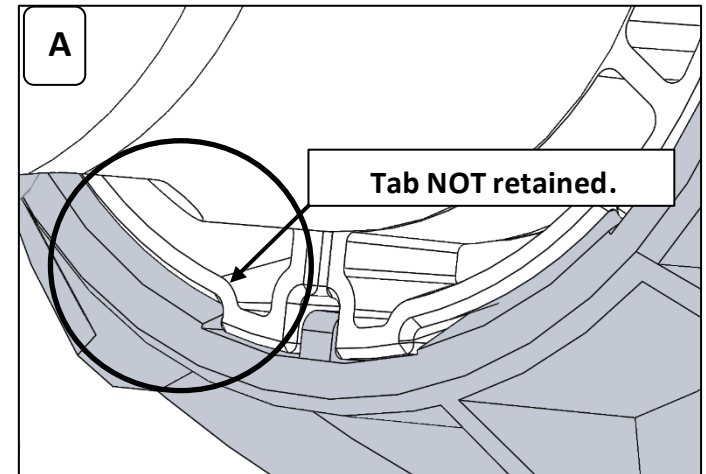
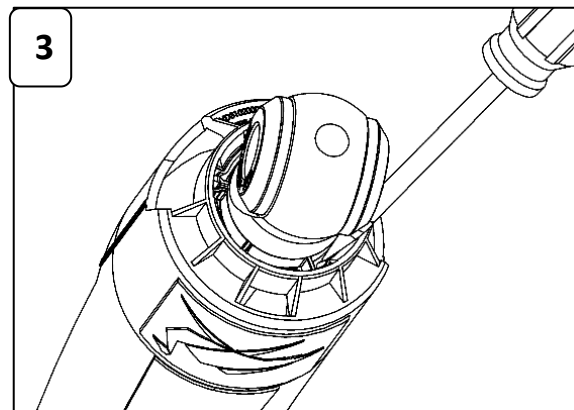
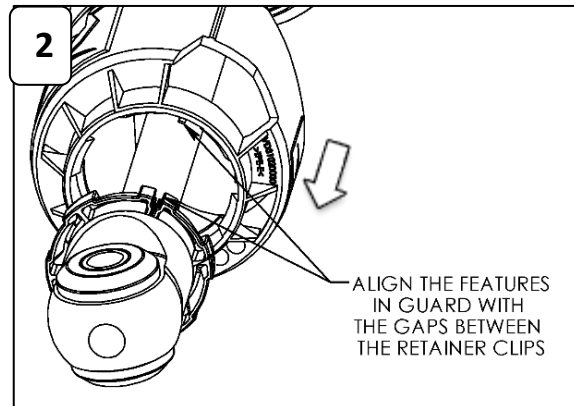
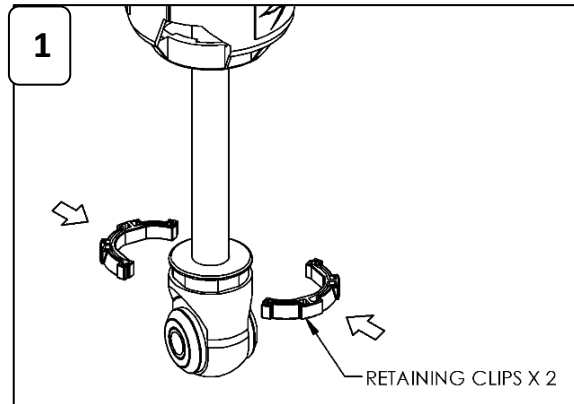
**1.** Fit the two retainers to the eyelet as shown. Note the orientation.



**2.** There are features on the shaft guard that locate in the gaps between the two retainers. Align the guard with these gaps and firmly pull the shaft guard down over the retainers to secure in place.

**3.** Check retainers are completely secured by guard. Use a flat blade screwdriver to poke retainers under tabs on guard if required. Refer to pictures (A) and (B) for correct fitment. **IMPORTANT: Ensure ALL tabs are fully retained.**

**NOTE: Ensure the stone guard does not touch the brake hose once installed**



**IMPORTANT: Ensure ALL tabs are fully retained**

## DAMPING ADJUSTMENT

These dampers have been set in the factory to be used for a vehicle with certain load.

If your load or accessory fitment differs, use the table below as a guide for recommended compression and rebound adjuster settings.

Part Number	Rear Pay Load (kg)	Compression	Rebound
BP5160056	0 - 200	0-3	0-3
	200 - 400	3-6	3-6
	400 +	6-10	6-10

## SPECIFICATIONS

BP5160056	Extended Length	609 mm
	Compressed Length	391 mm

## SPARE PARTS

Refer to Service And Parts Manual section:

- For BP5160016 see **BP-51 S&P 3.1-BP5160056**

## BP5160056

